

Complex PCI 2017

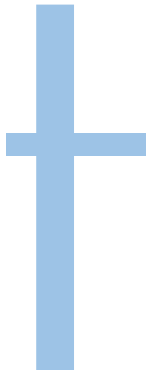
You Can Not Pass

Dr. Shu-I Lin, M.D.

Mackay Memorial Hospital

Taiwan

2015



Angina

Dyspnea on exertion

65 year-old man

Hypertension

Hyperlipidemia

Smoking

2015

Angina

Dyspnea on exertion

Thallium scan:

15% total myocardium

44% inferolateral wall

65 year-old man

Hypertension

Hyperlipidemia

Smoking

65 year-old man

2015

Angina

Dyspnea on exertion

Thallium scan:

15% total myocardium

44% inferolateral wall

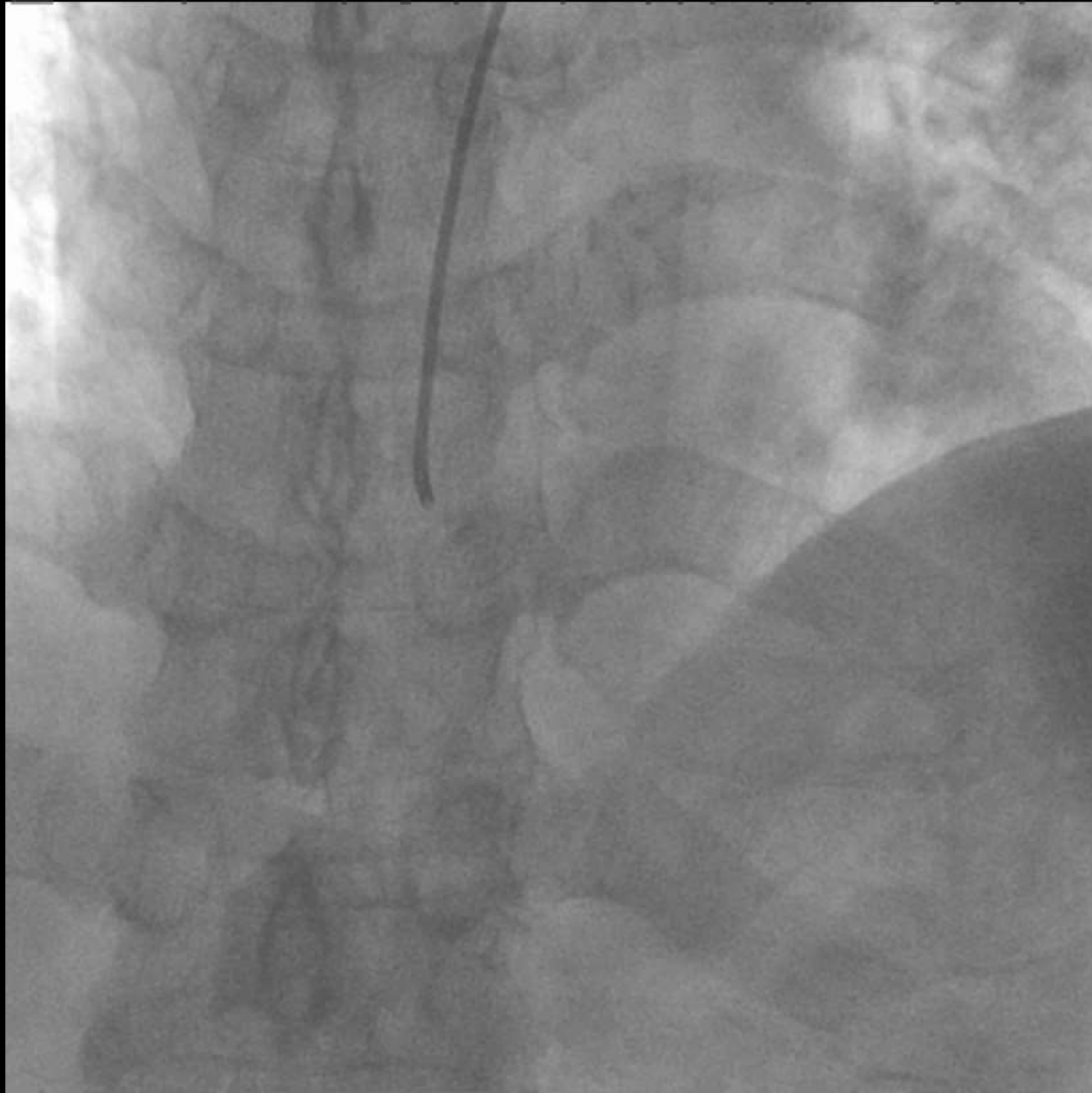
2016

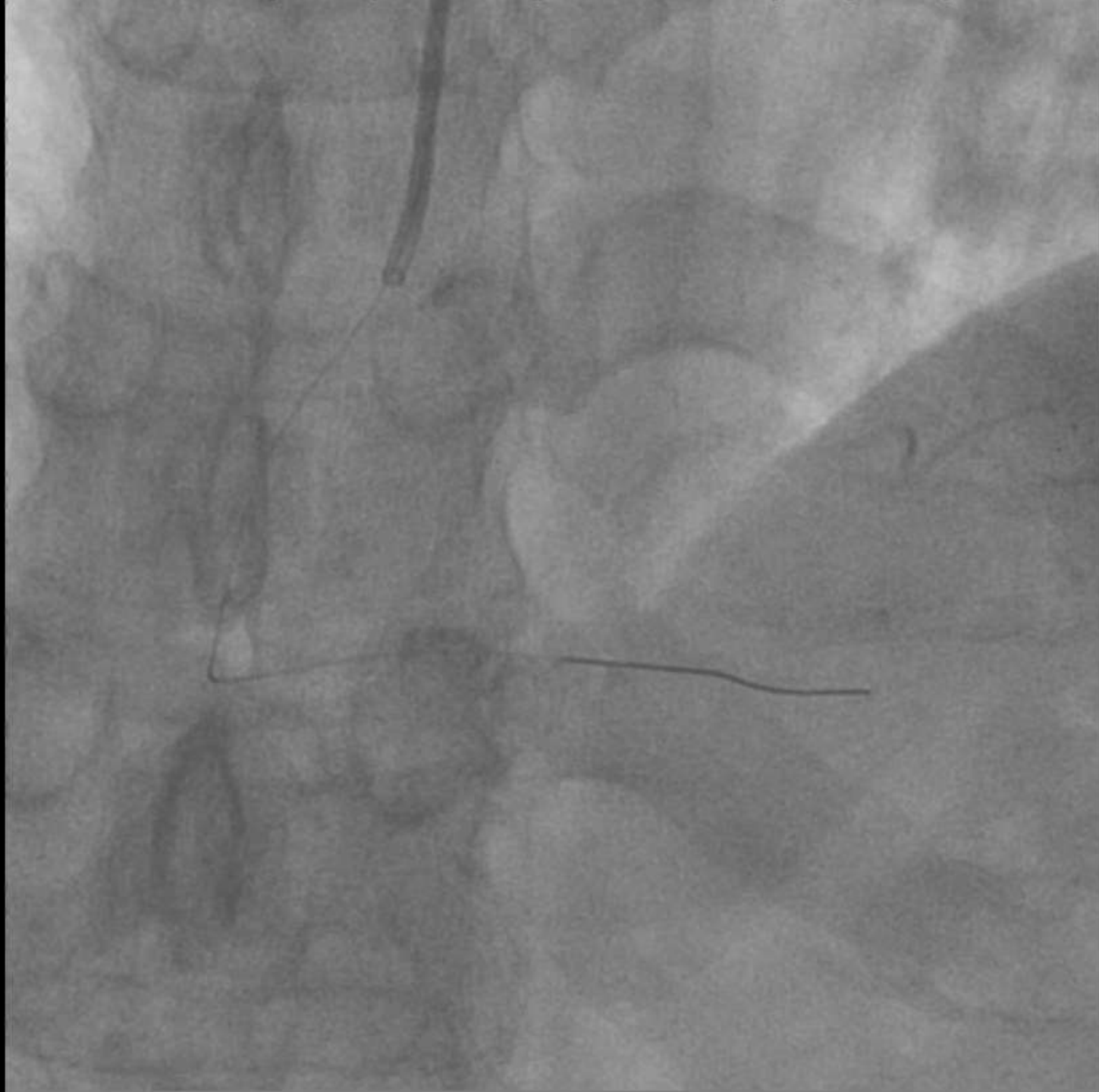
Admission

Hypertension
Hyperlipidemia
Smoking

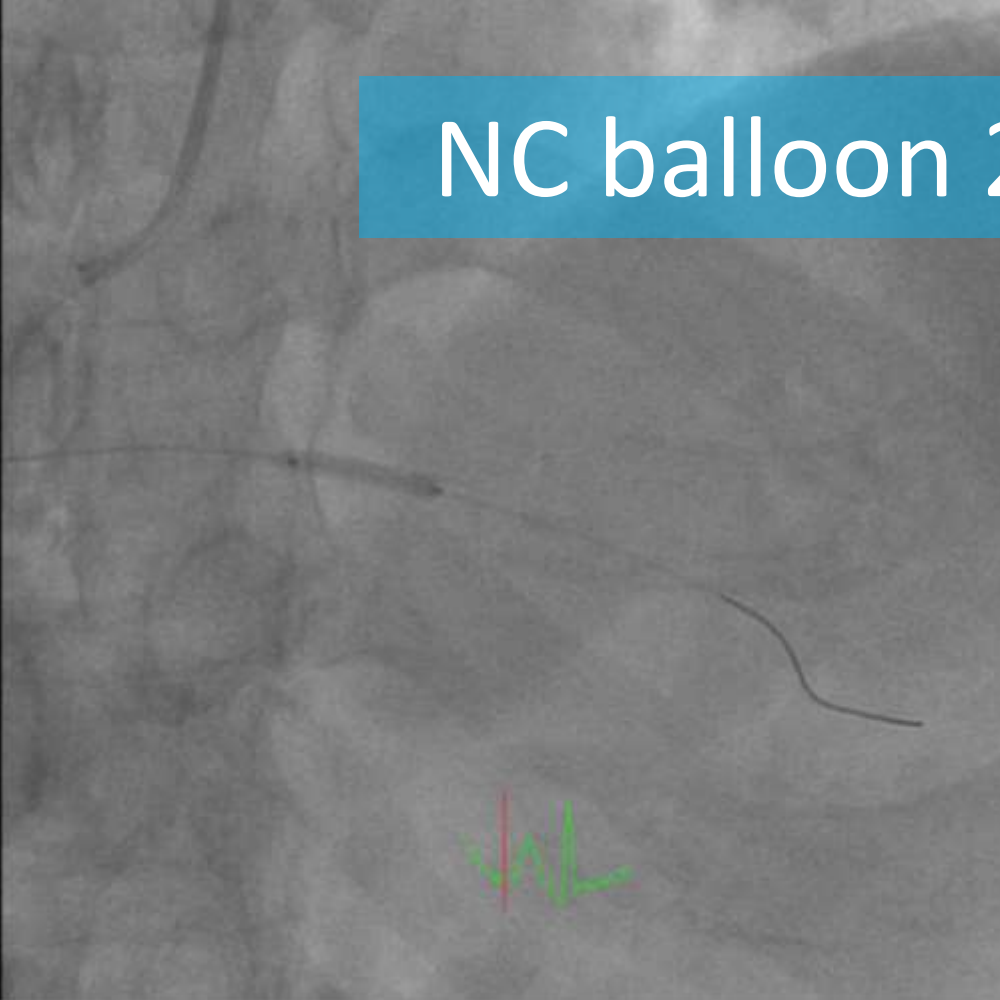
Cath Lab



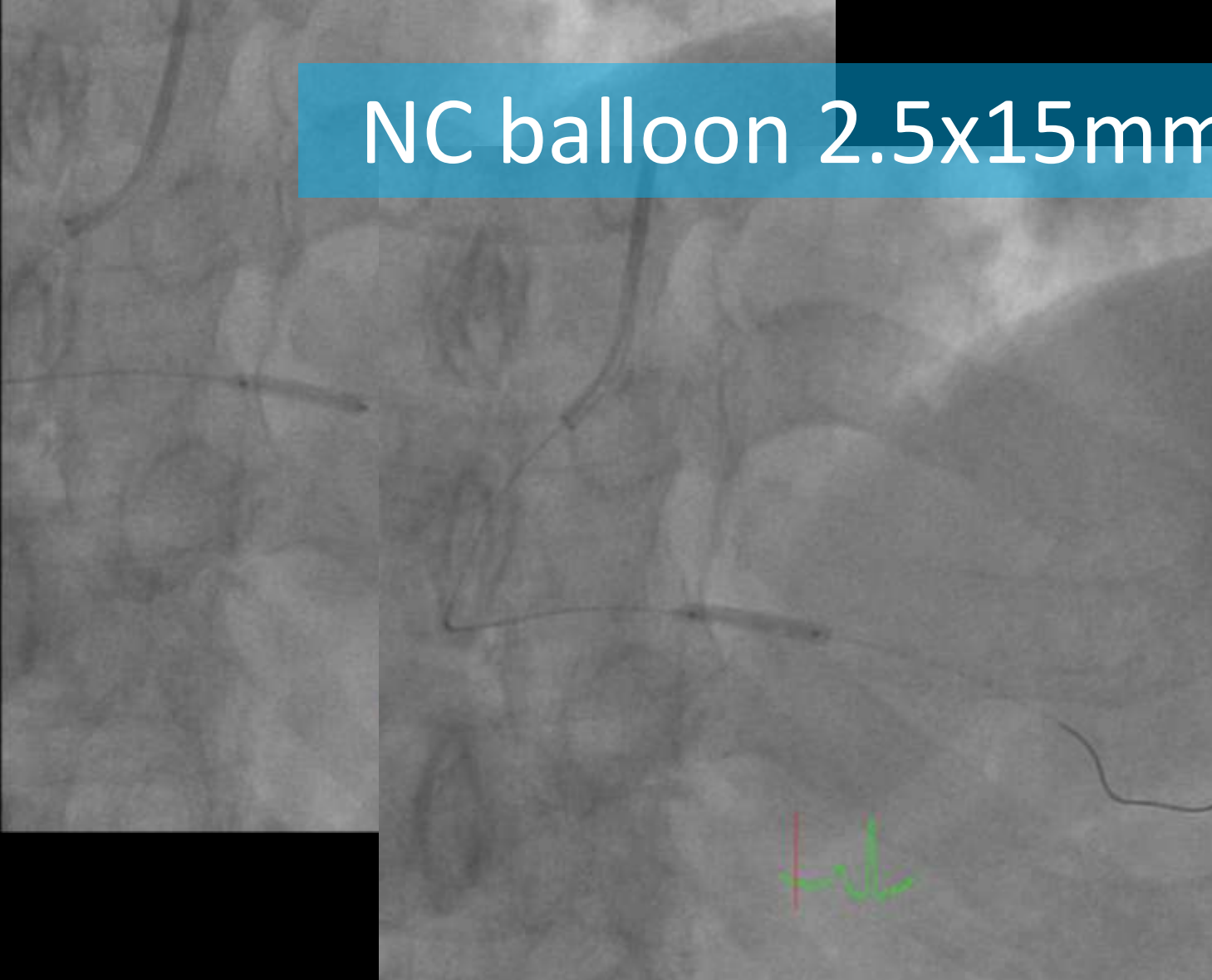




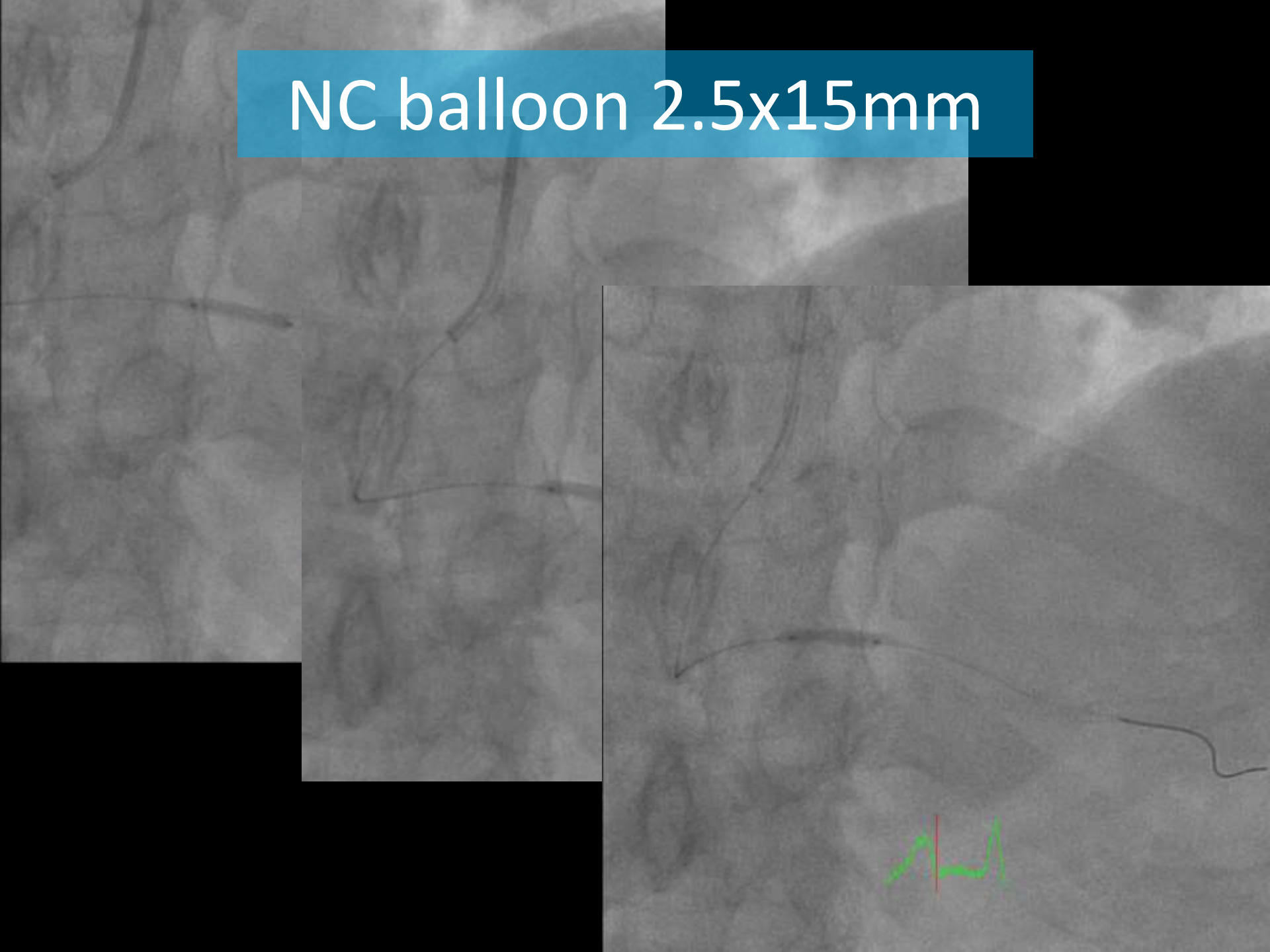
NC balloon 2.5x15mm

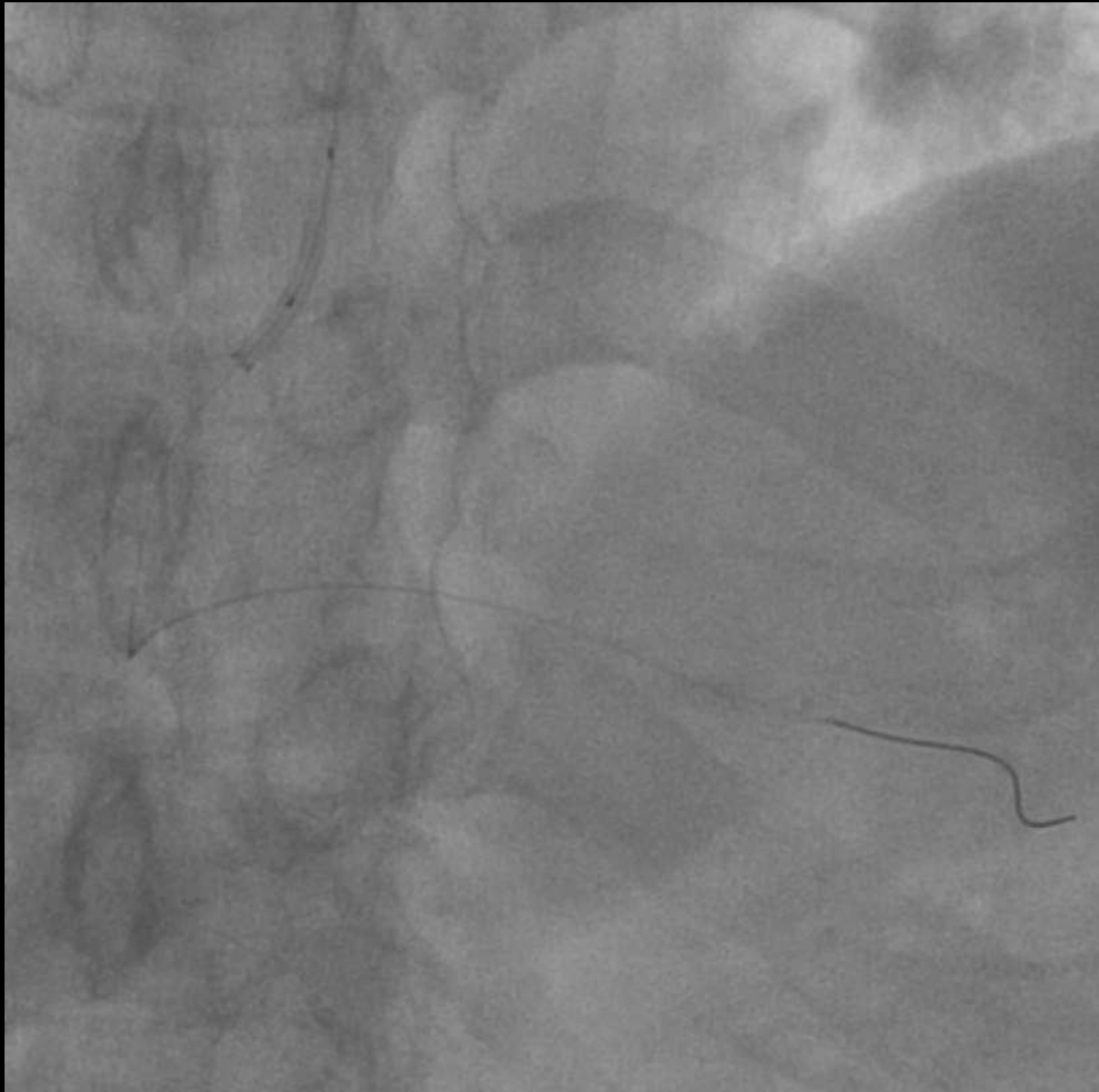


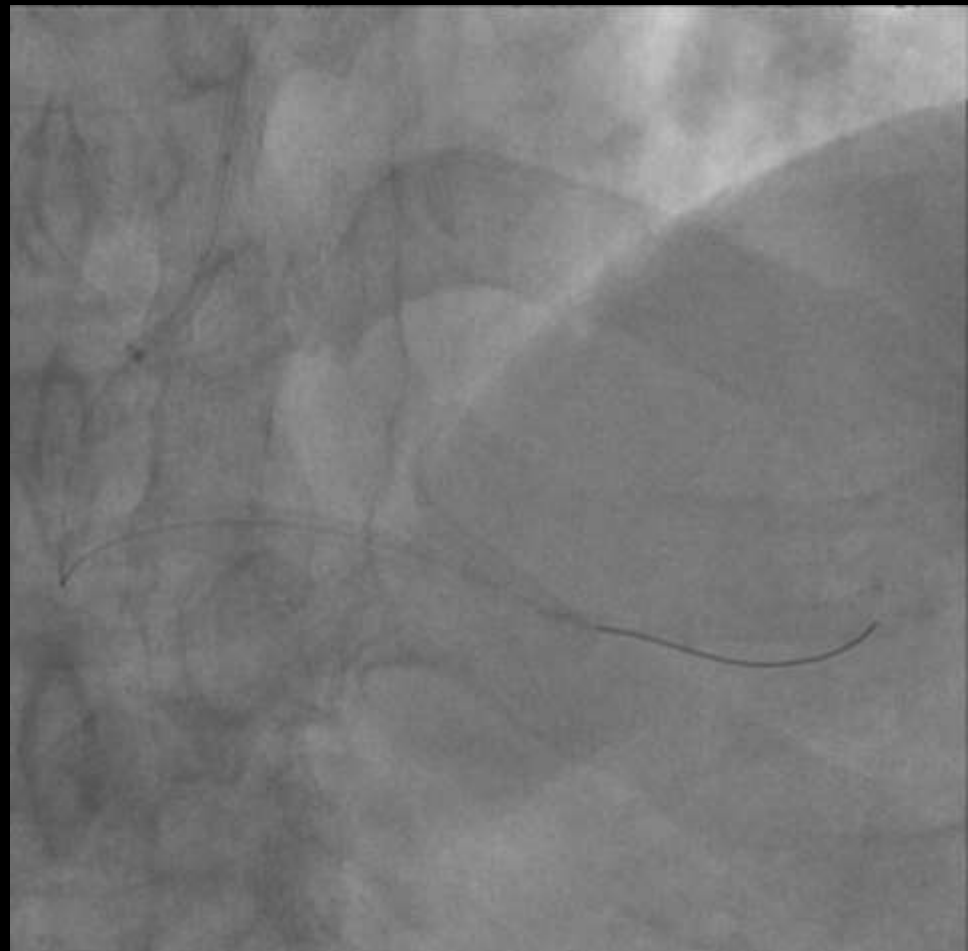
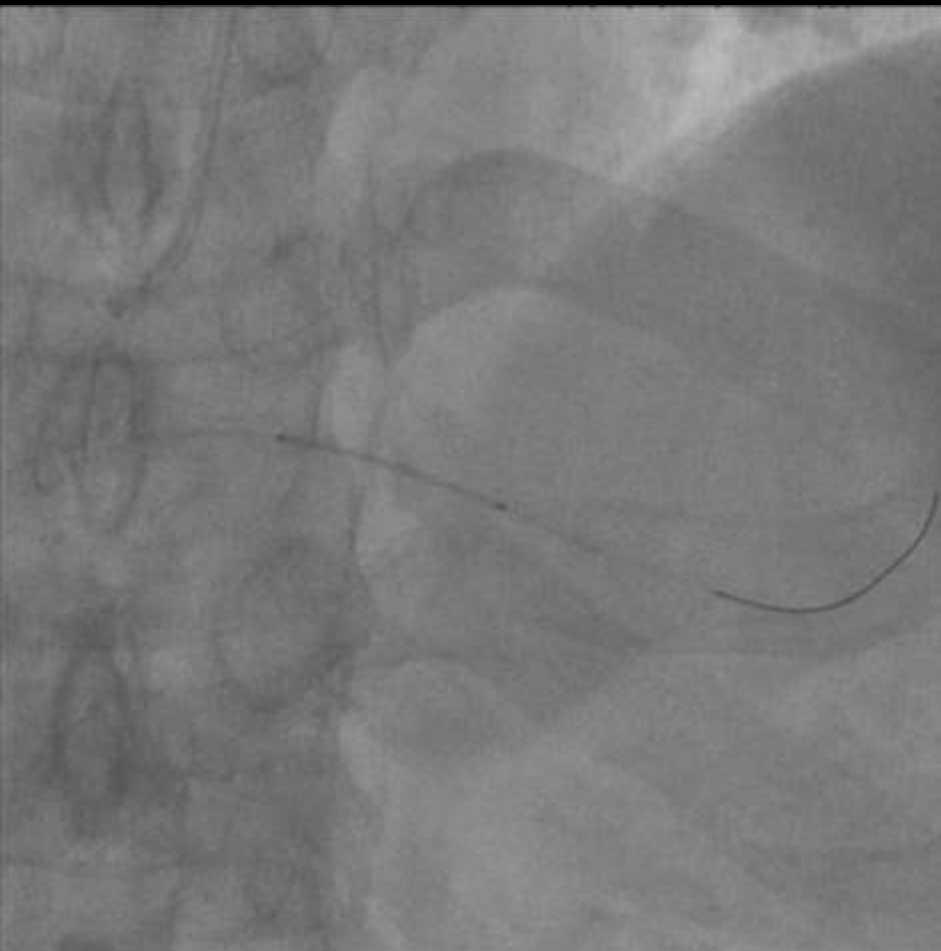
NC balloon 2.5x15mm



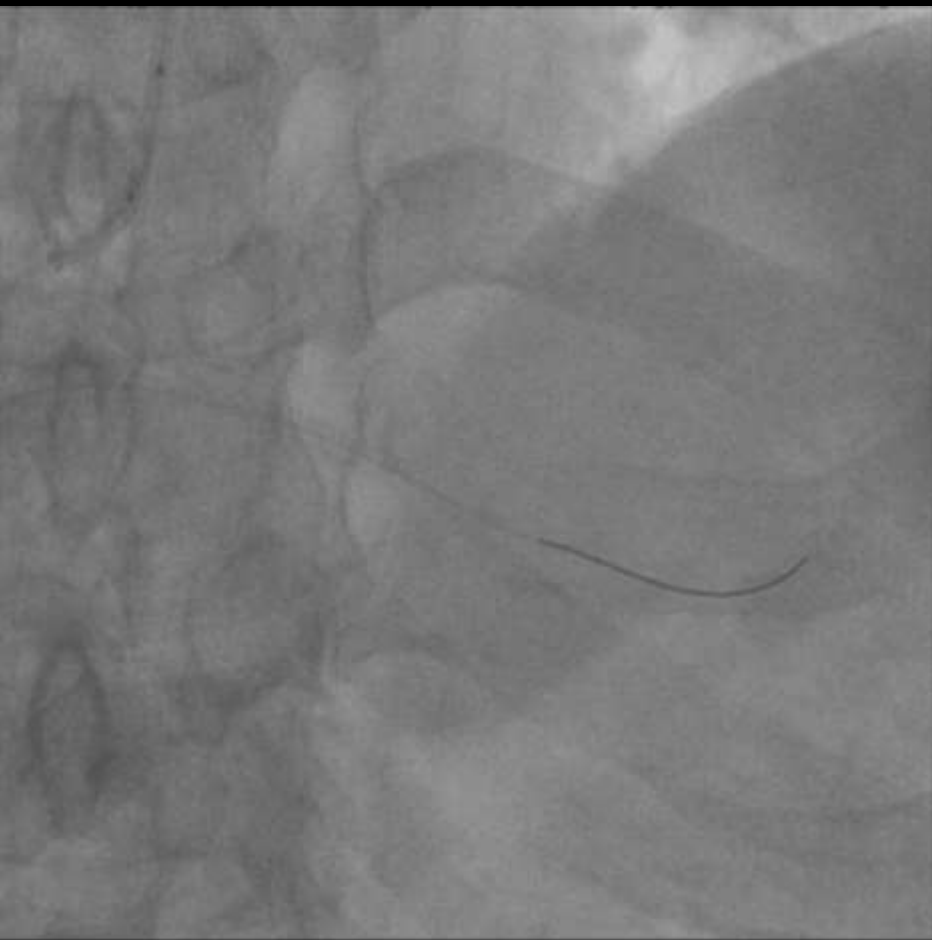
NC balloon 2.5x15mm







DES 2.5x22mm



65 year-old man

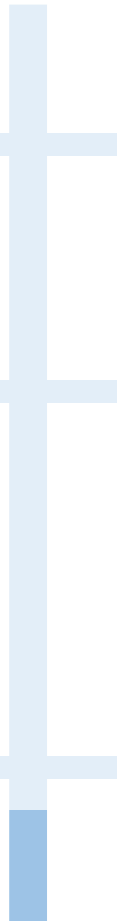
2015

Angina
Dyspnea on exertion

Hypertension
Hyperlipidemia
Smoking

2016

Admission
Discharge



65 year-old man

2015

Angina
Dyspnea on exertion

Hypertension
Hyperlipidemia
Smoking

Thallium scan:
15% total myocardium
44% inferolateral wall

2016

Admission
Discharge

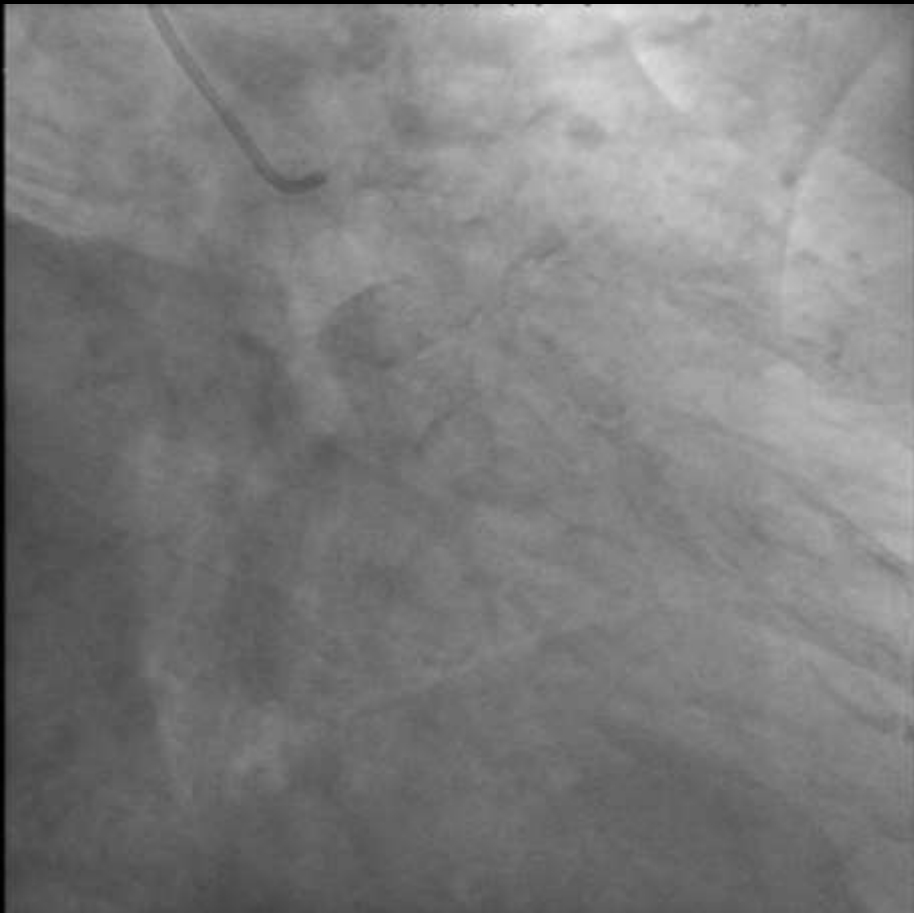
2017

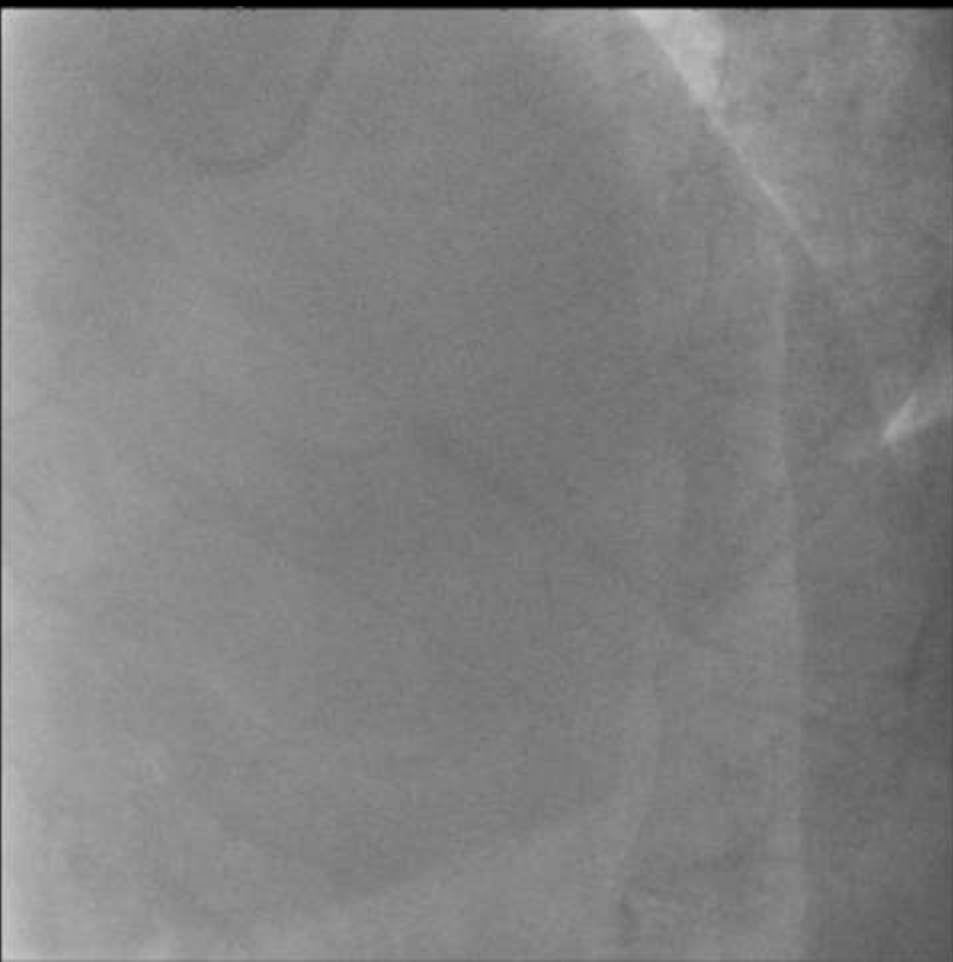
Chest pain recurrence
Admission



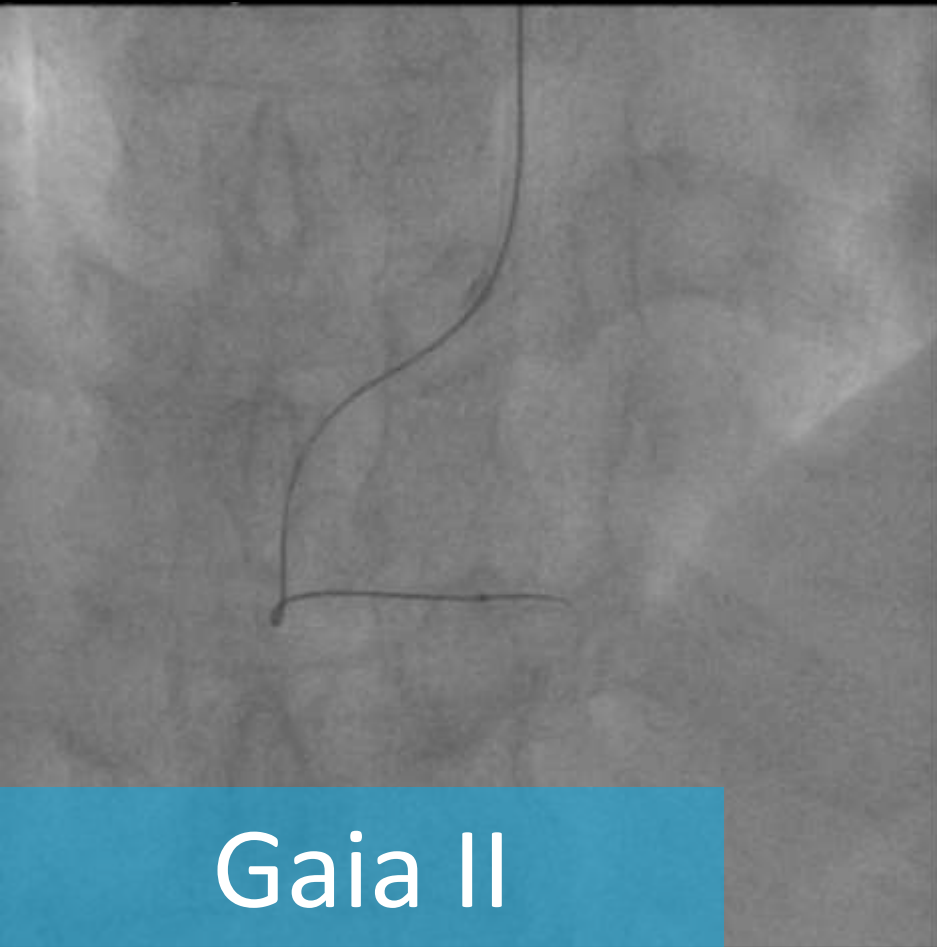
Cath Lab

9 months later

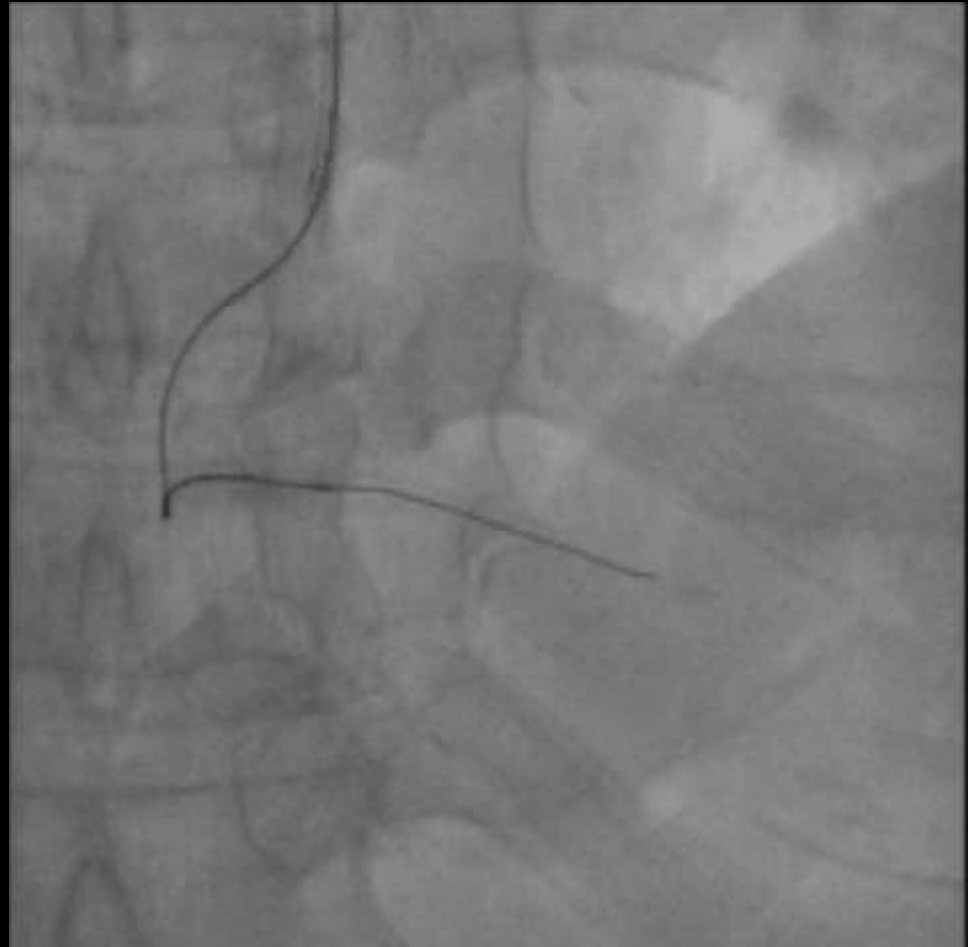




Fielder FC

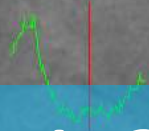
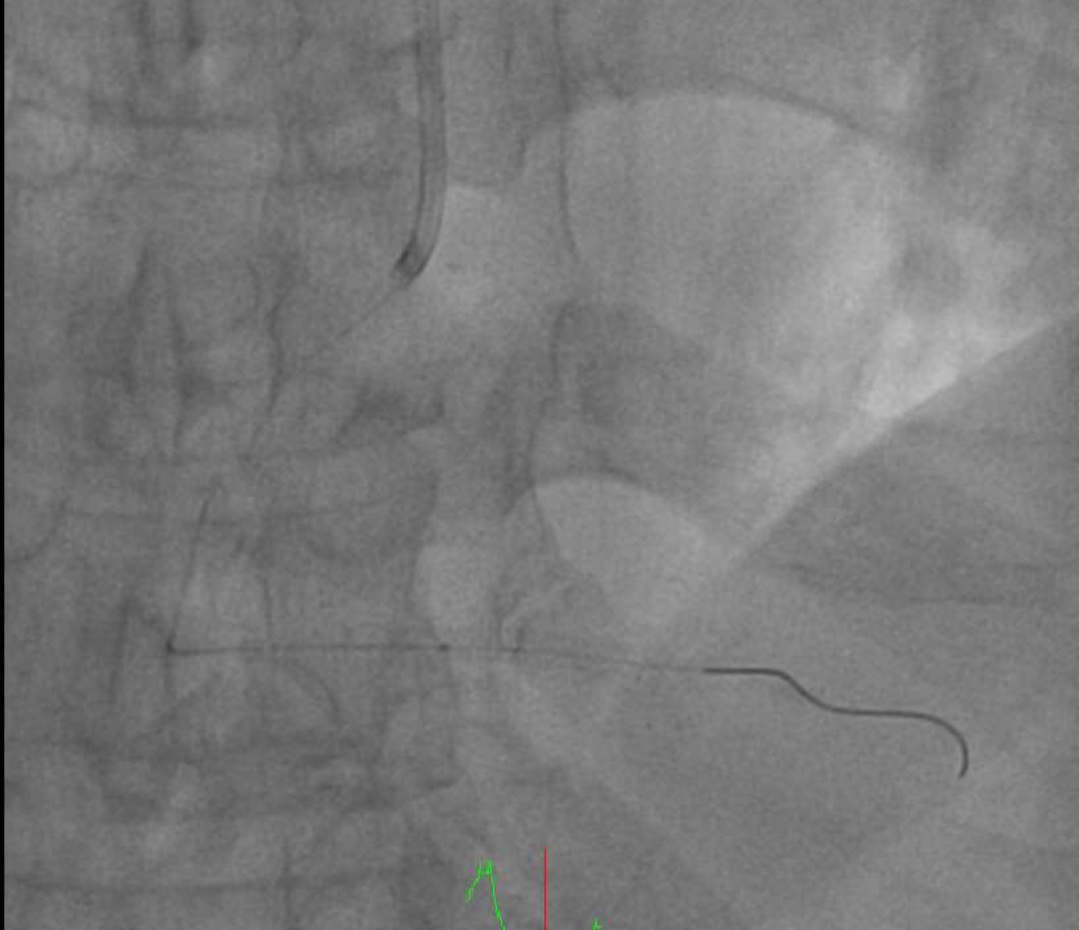


Gaia II





Emerge 1.2x8mm



Emerge 1.2x8mm

A grayscale microscopic image showing a highly textured, fibrous surface. The texture consists of irregular, interconnected fibers and ridges. A blue rectangular overlay box is positioned in the lower-left quadrant of the image. A thin green line is visible on the right side of the blue box, extending upwards.

Emerge 1.2x8mm

Mini-Trek 1.2x6mm

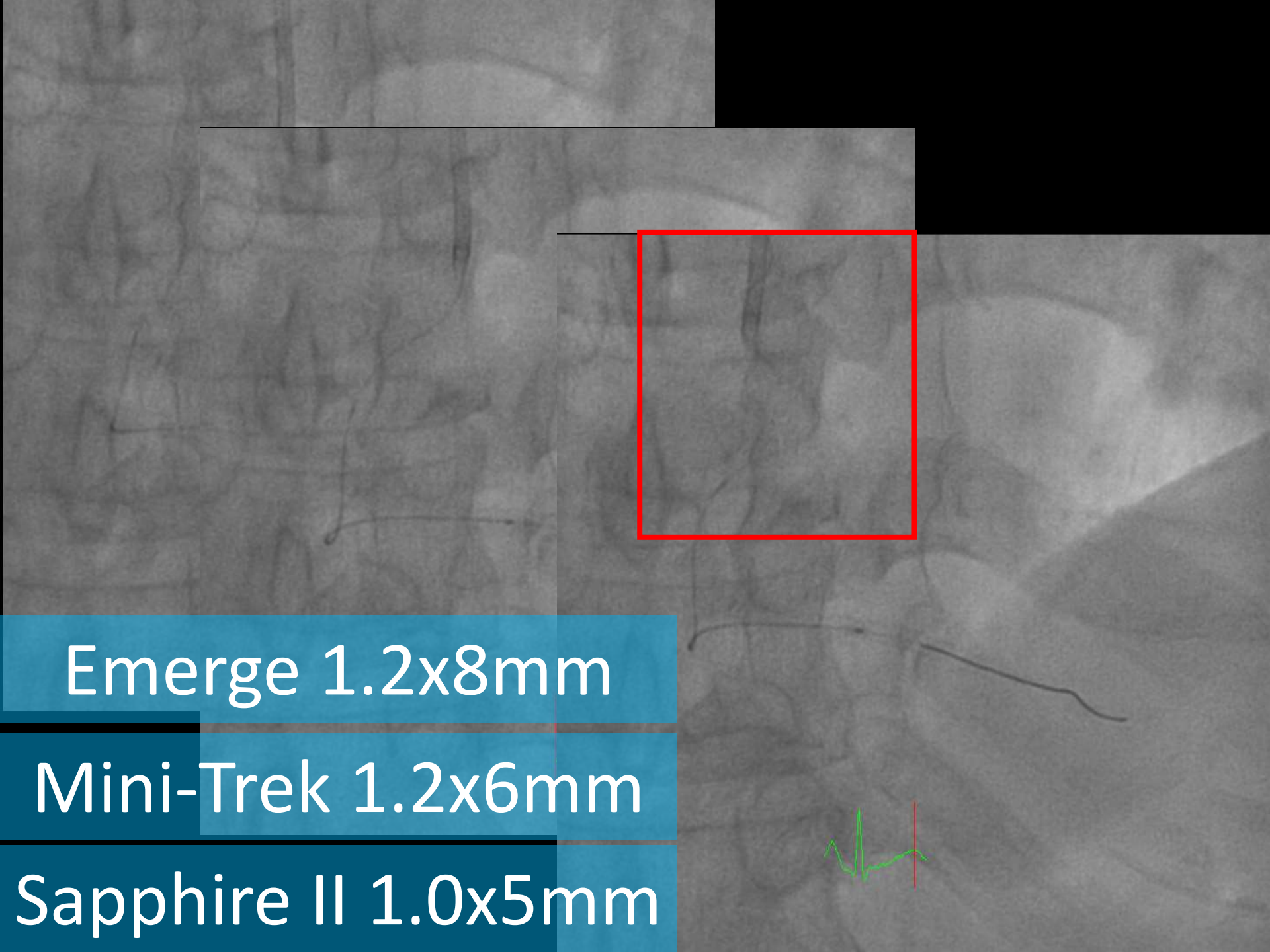


Emerge 1.2x8mm

Mini-Trek 1.2x6mm

Sapphire II 1.0x5mm





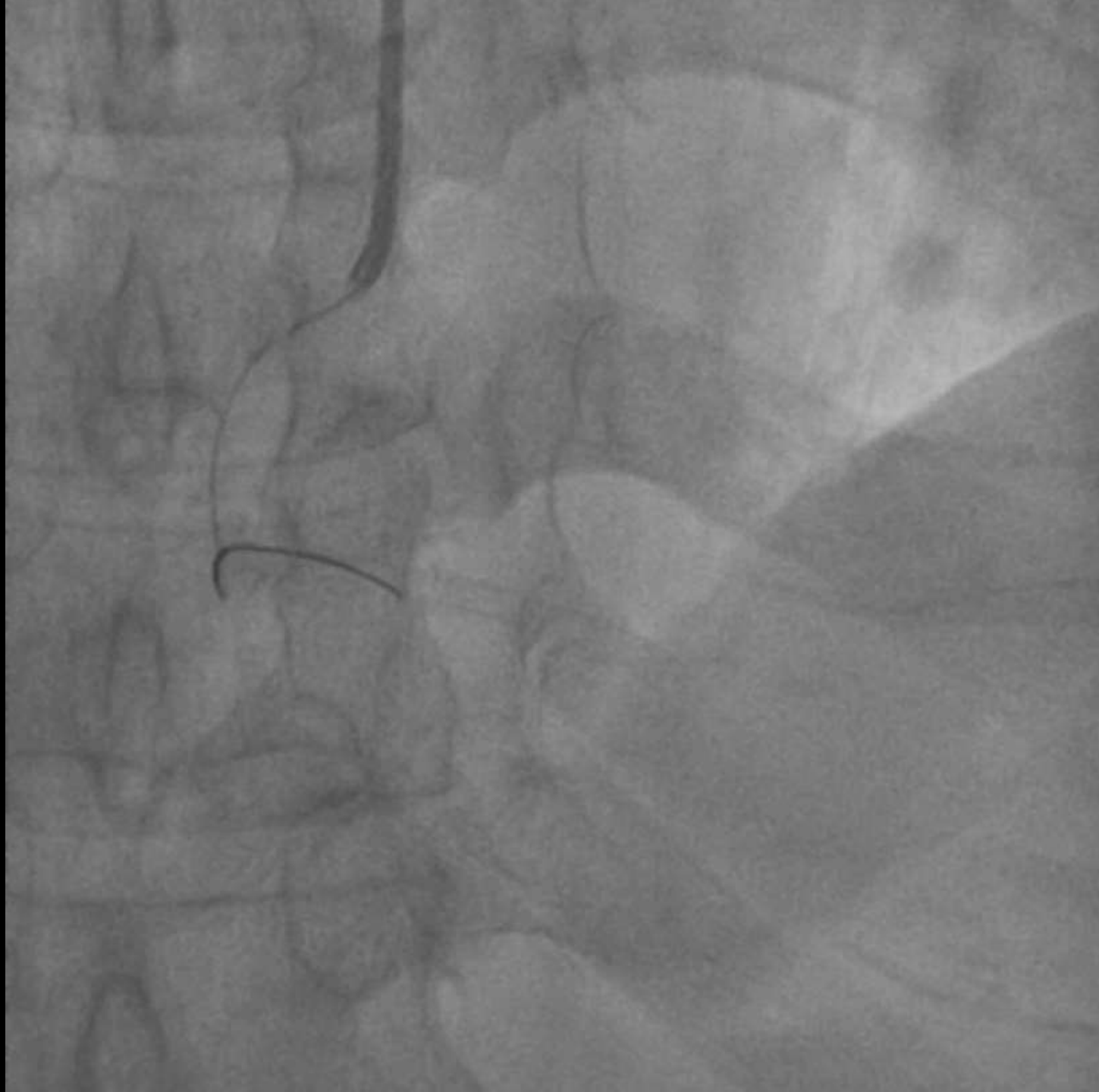
Emerge 1.2x8mm

Mini-Trek 1.2x6mm

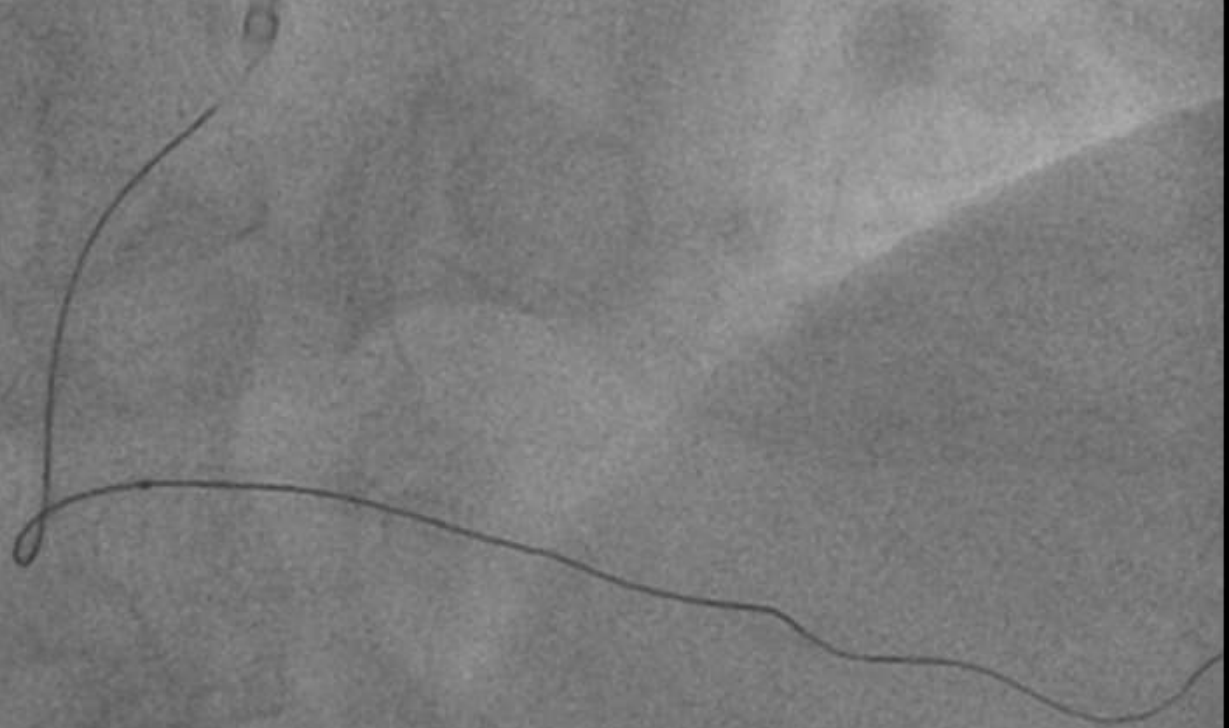
Sapphire II 1.0x5mm

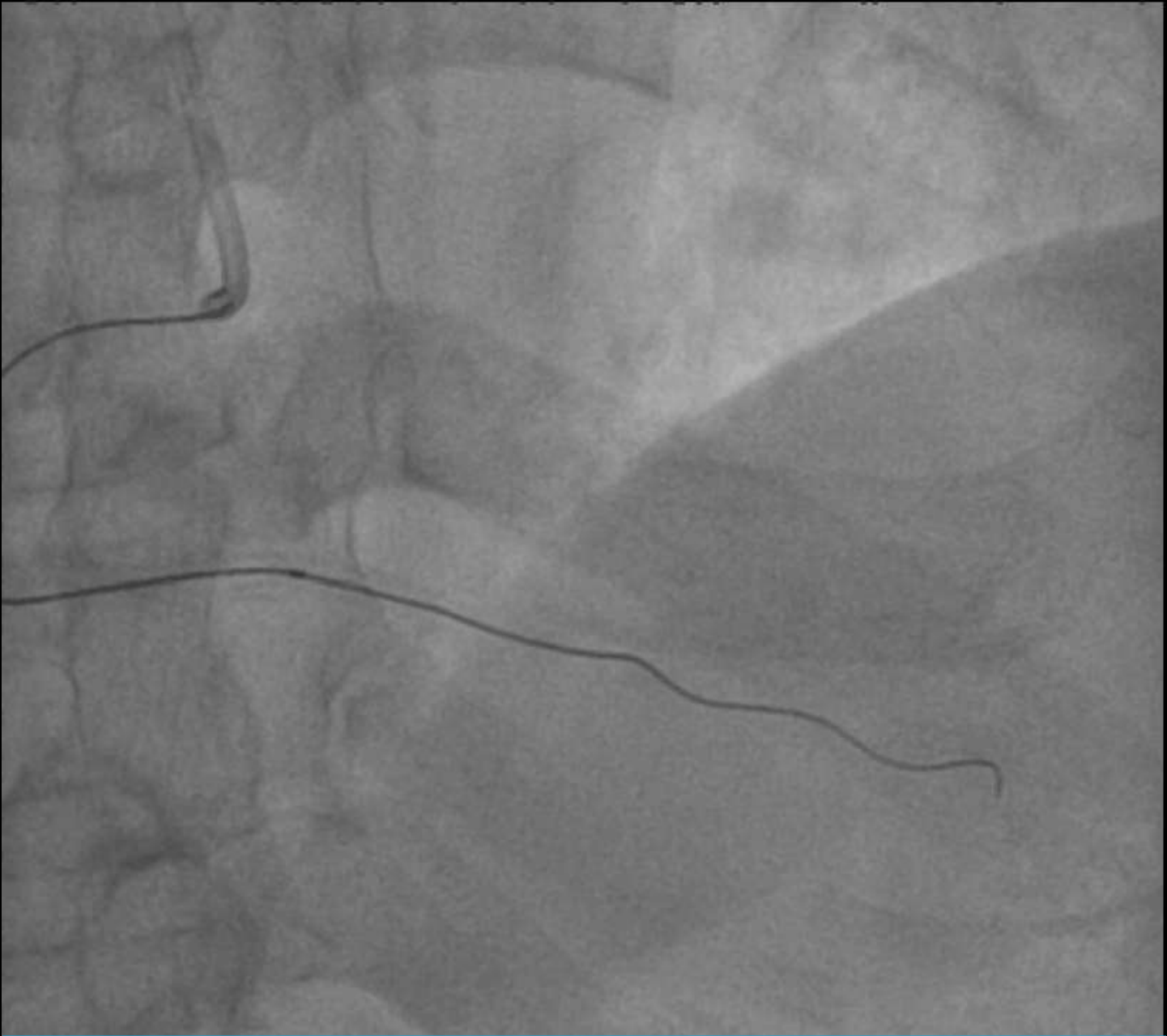


System dislodge



XT-R





Balloon can't cross

Increase support for delivery

Increase support for delivery

Anchor

Buddy wire

Change Catheter

Deep seating

Co-Axial

Five in six

Increase support for delivery

Anchor

Buddy wire

Change Catheter

Deep seating

Co-Axial

Five in six

**Boston
Scientific**

Advancing science for life™

Guidezilla™

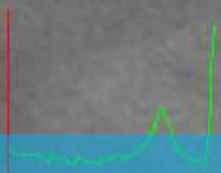
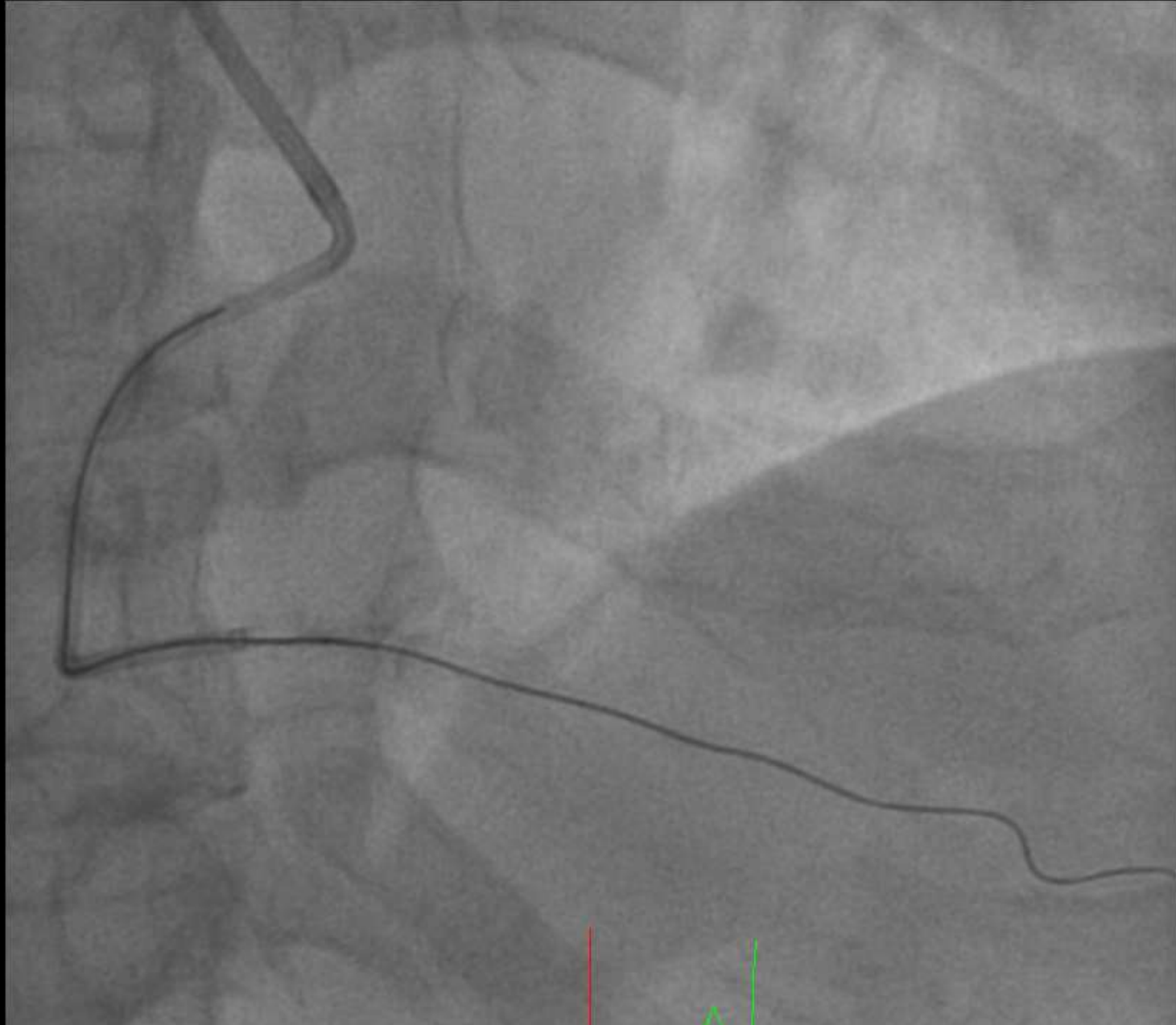
Guide Extension Catheter

8% More Pushable†

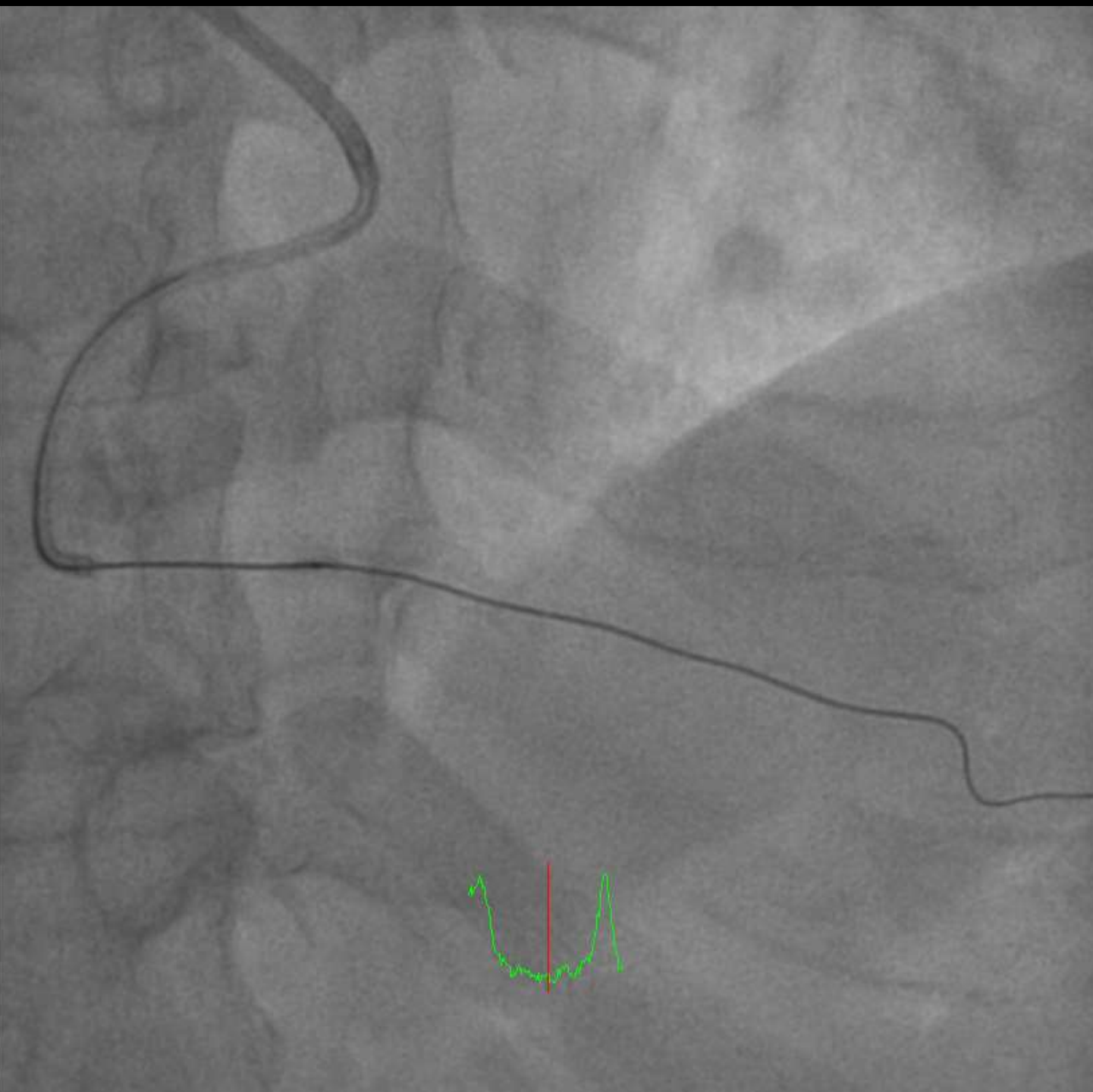
55% Less Frictional Force† / Better Deliverability

8% Increased Back-Up Support†





Guidezilla



You shall not pass!!!



What's Next Step ?

What's Next Step ?

Quit now

What's Next Step ?

Quit now

Enhance more support

What's Next Step ?

Quit now

Enhance more support

Change to retrograde

What's Next Step ?

Quit now

Enhance more support

Change to retrograde

Image study

What's Next Step ?

Quit now

Enhance more support

Change to retrograde

Image study

Rotablation

What's Next Step ?

Quit now

Enhance more support

Change to retrograde

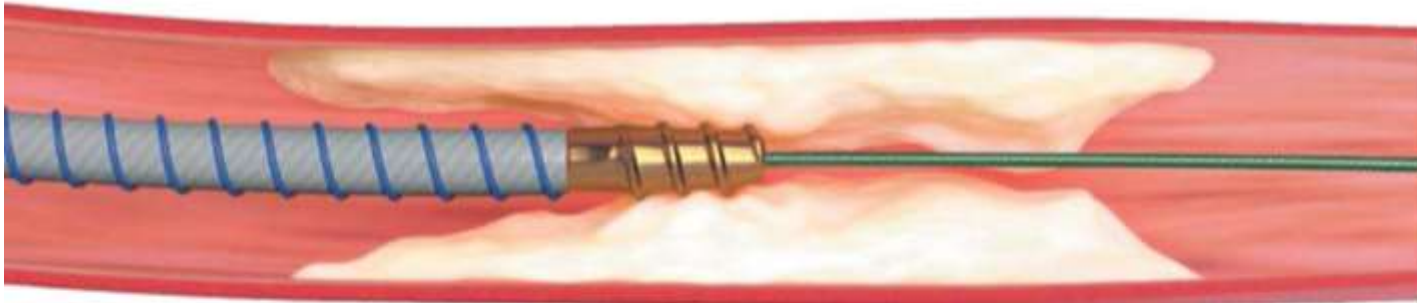
Image study

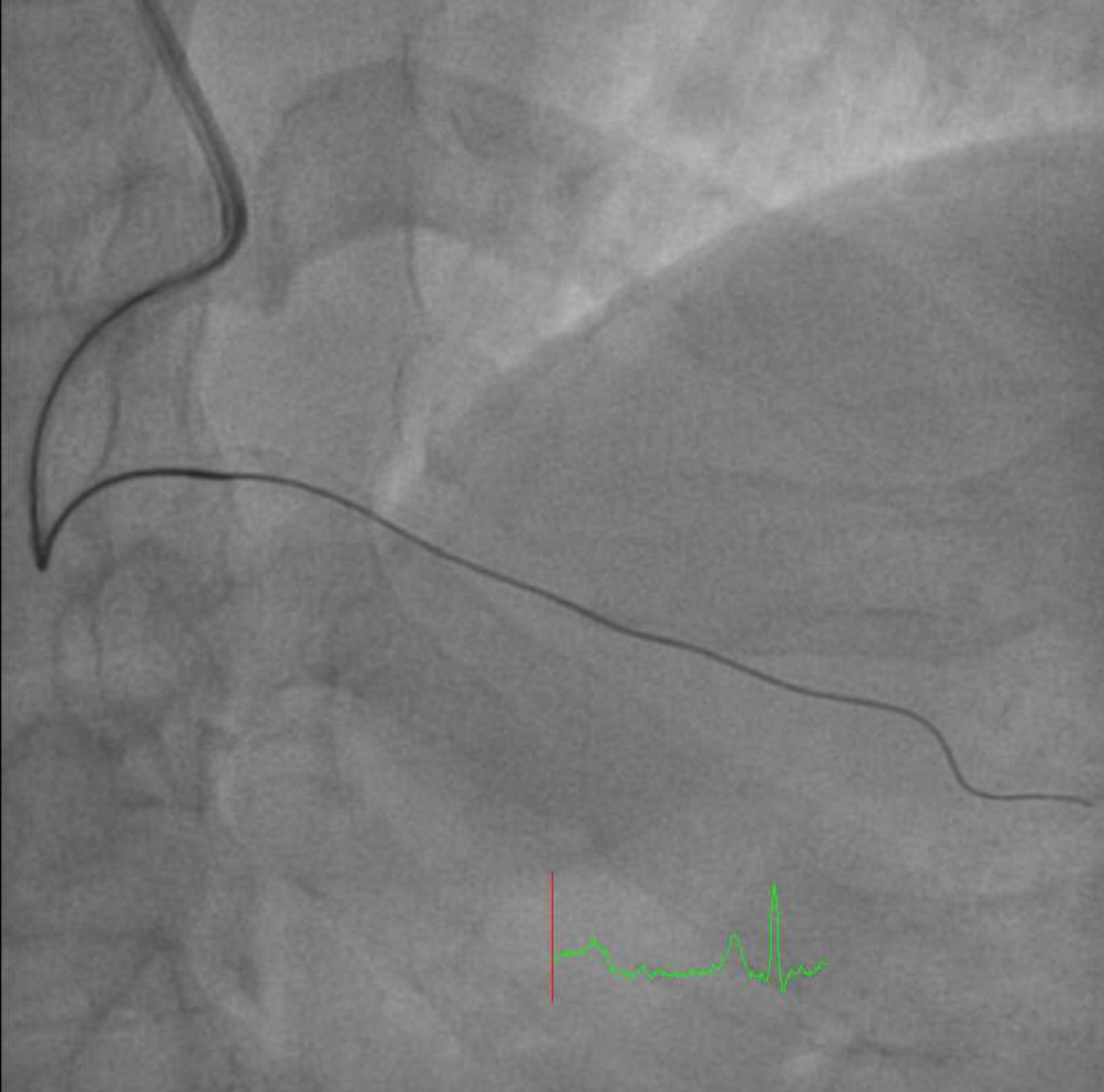
Rotablation

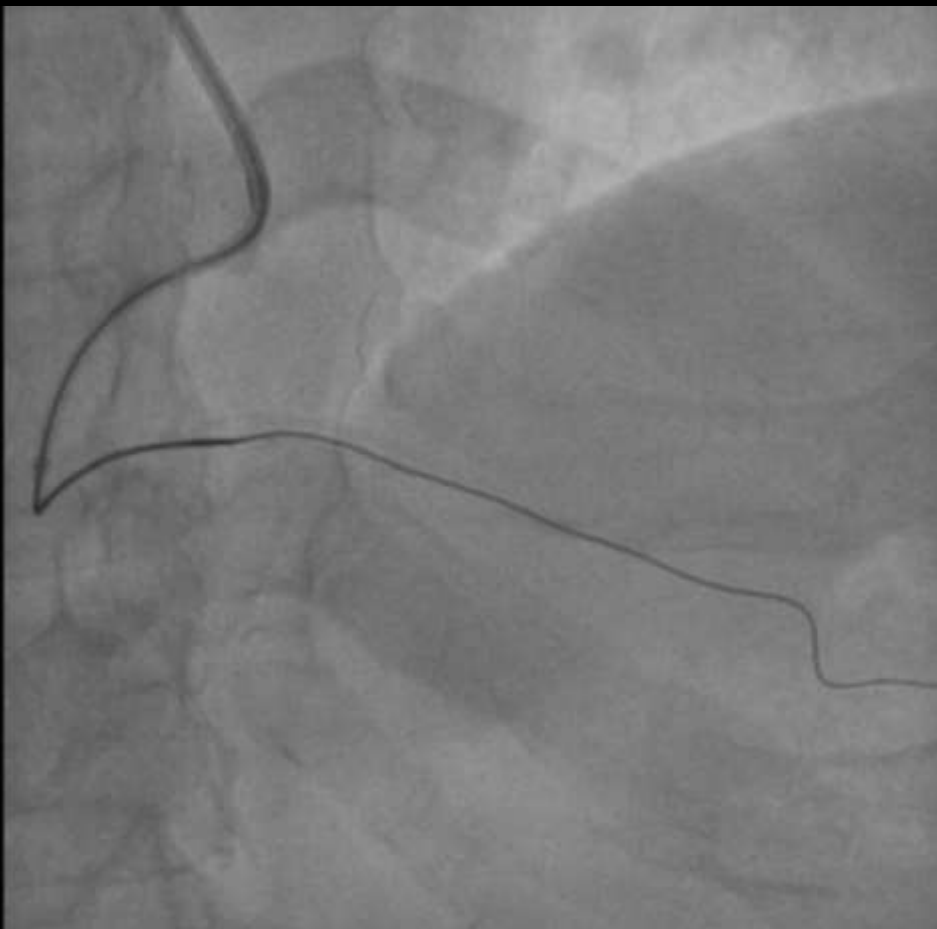
Turnpike Gold

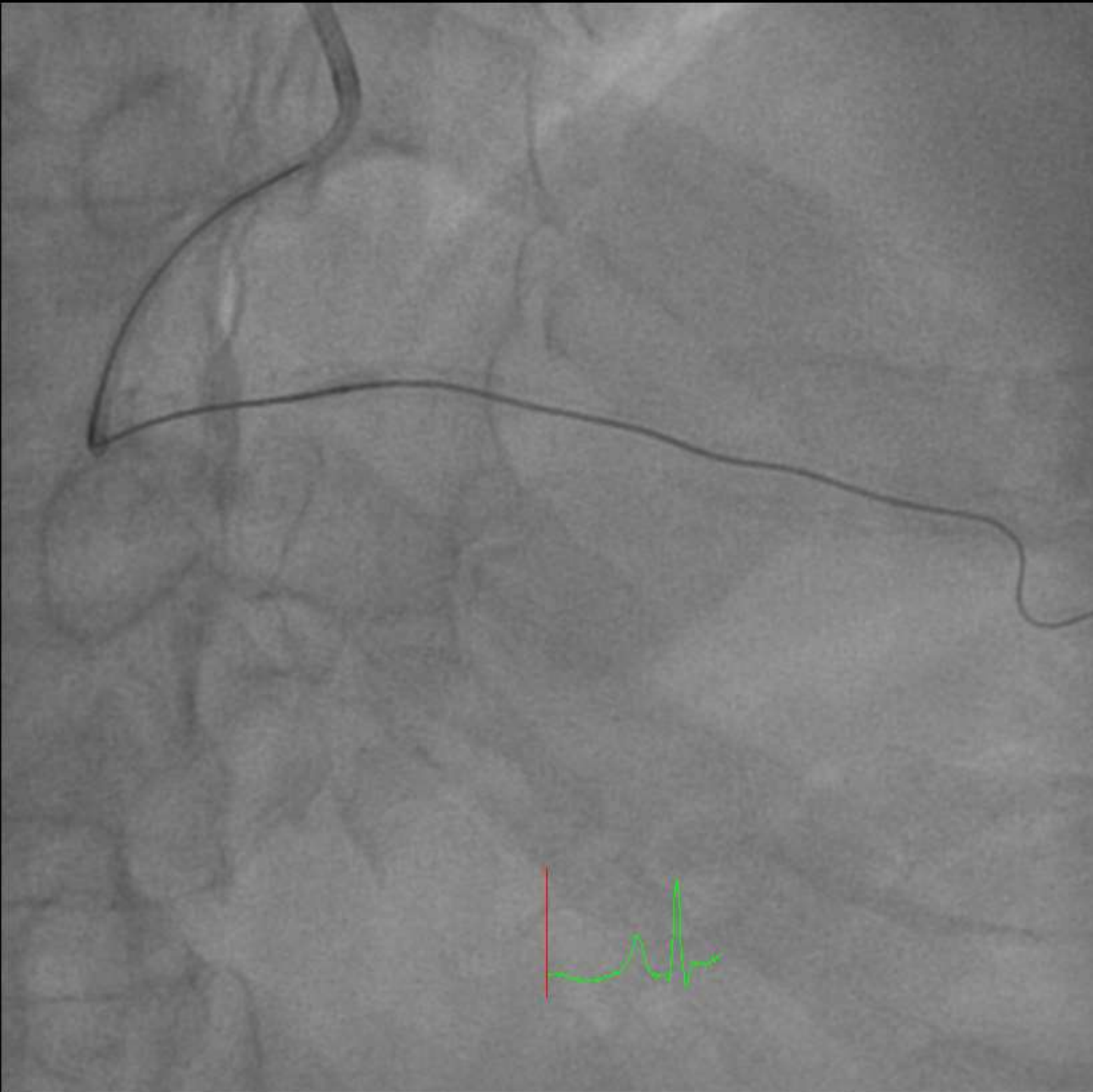


Vascular
SOLUTIONS

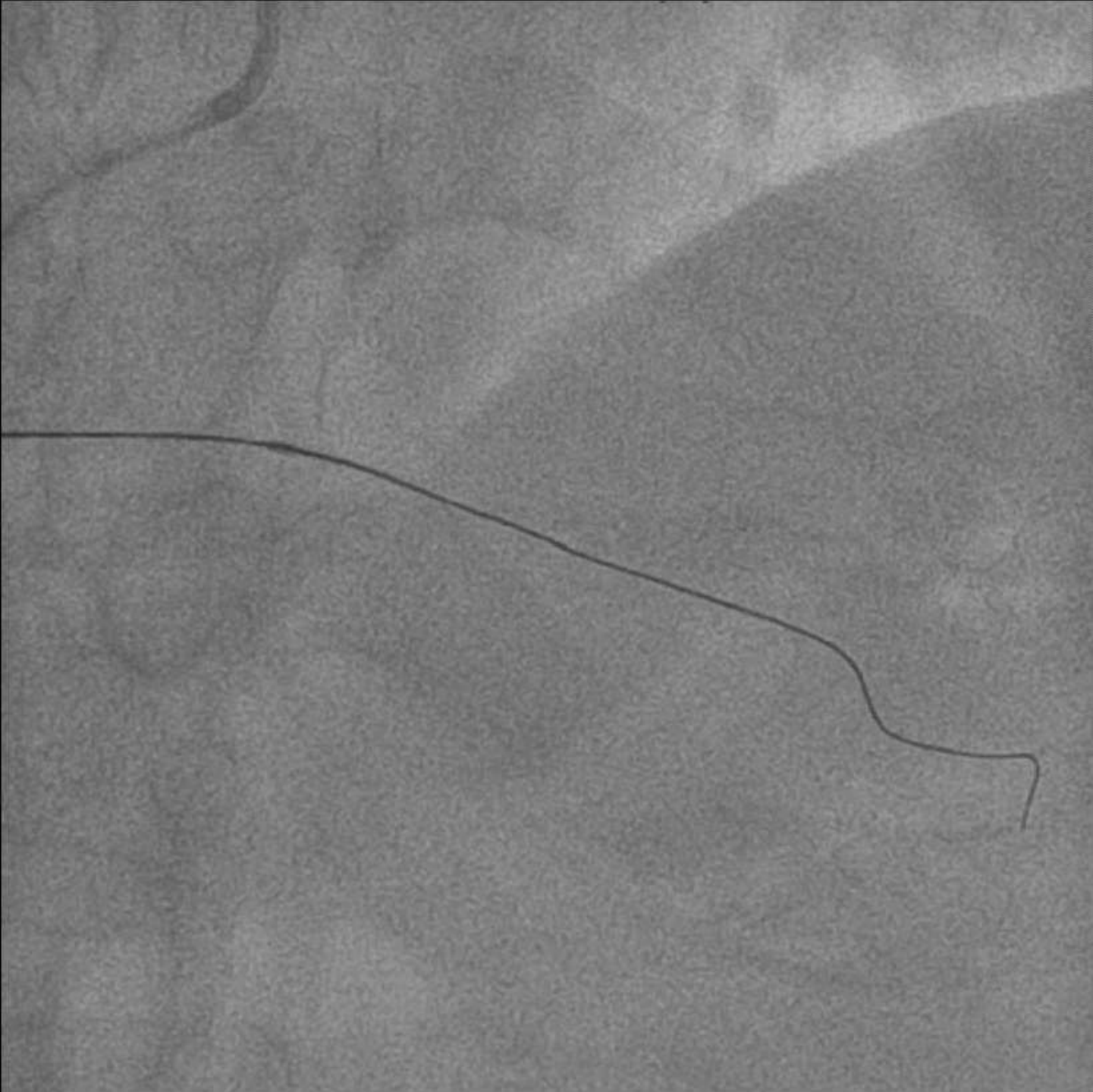




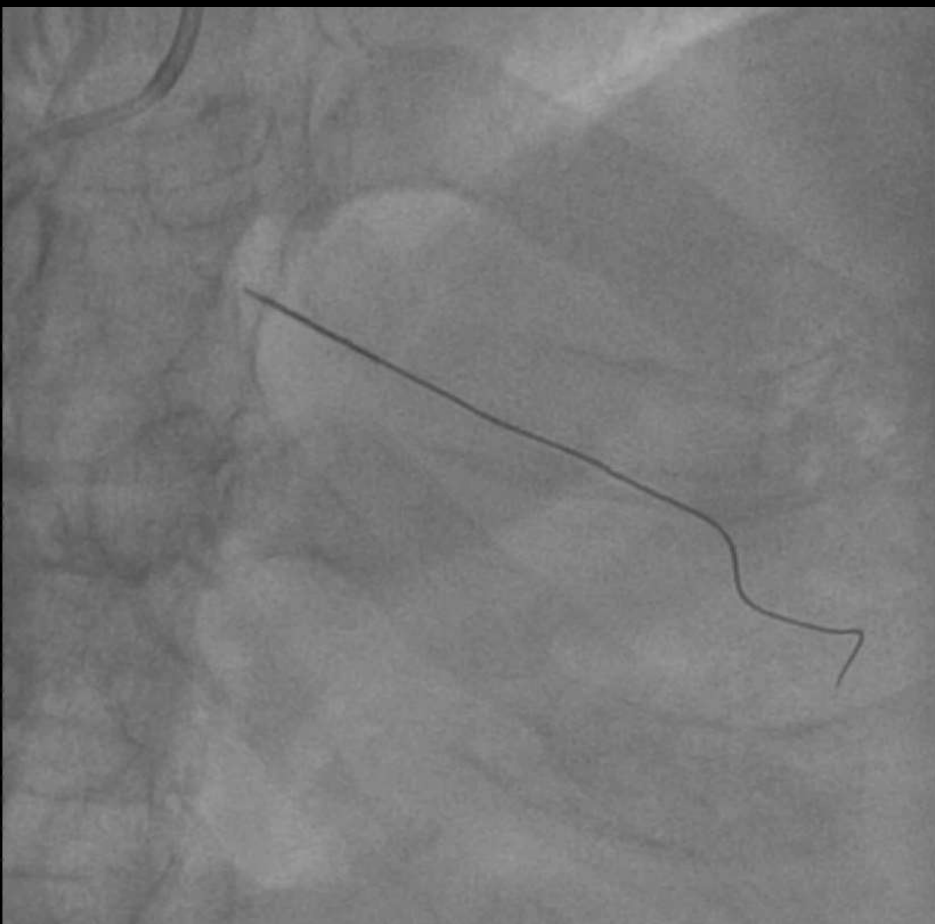








Suddenly
resistance
disappear



Remove fracture wire

Remove fracture wire

Two or three wire rotation

Stenting over

Observation

Loop snare removal

Remove fracture wire

Two or three wire rotation

Stenting over

Observation

Loop snare removal



Remove fracture wire

Two or three wire rotation

Stenting over

Observation

Loop snare removal

Remove fracture wire

Two or three wire rotation

Stenting over

Observation

Loop snare removal

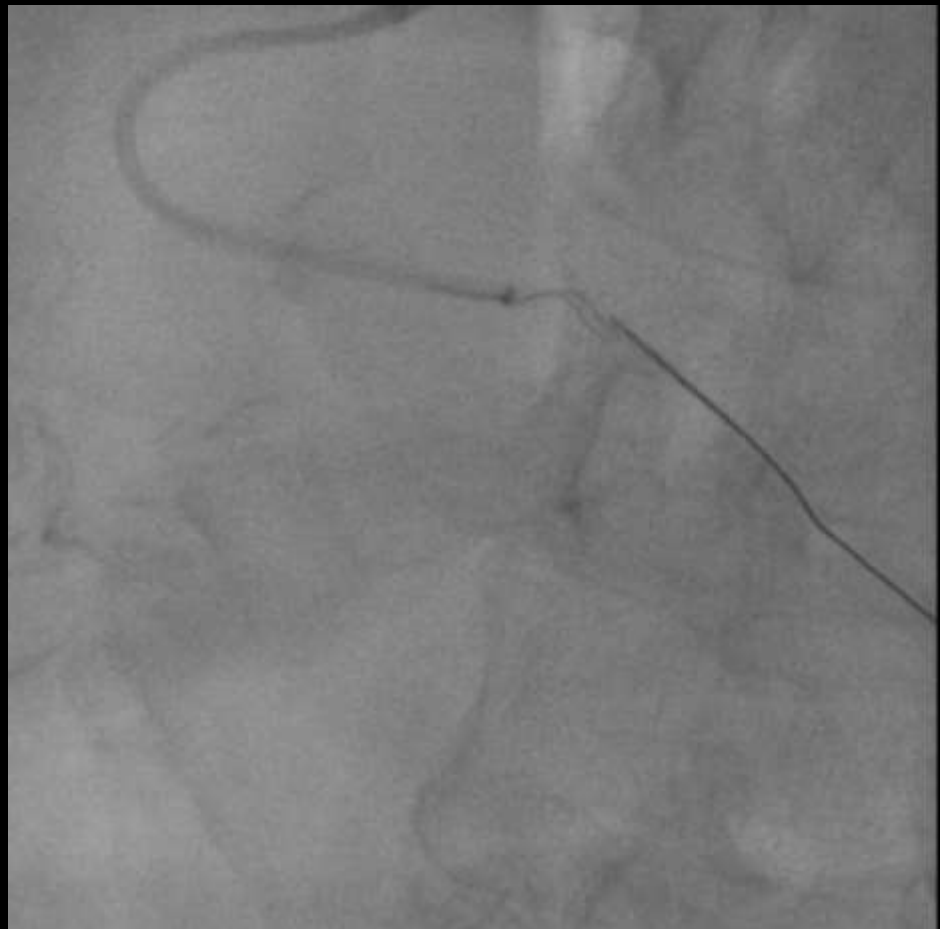
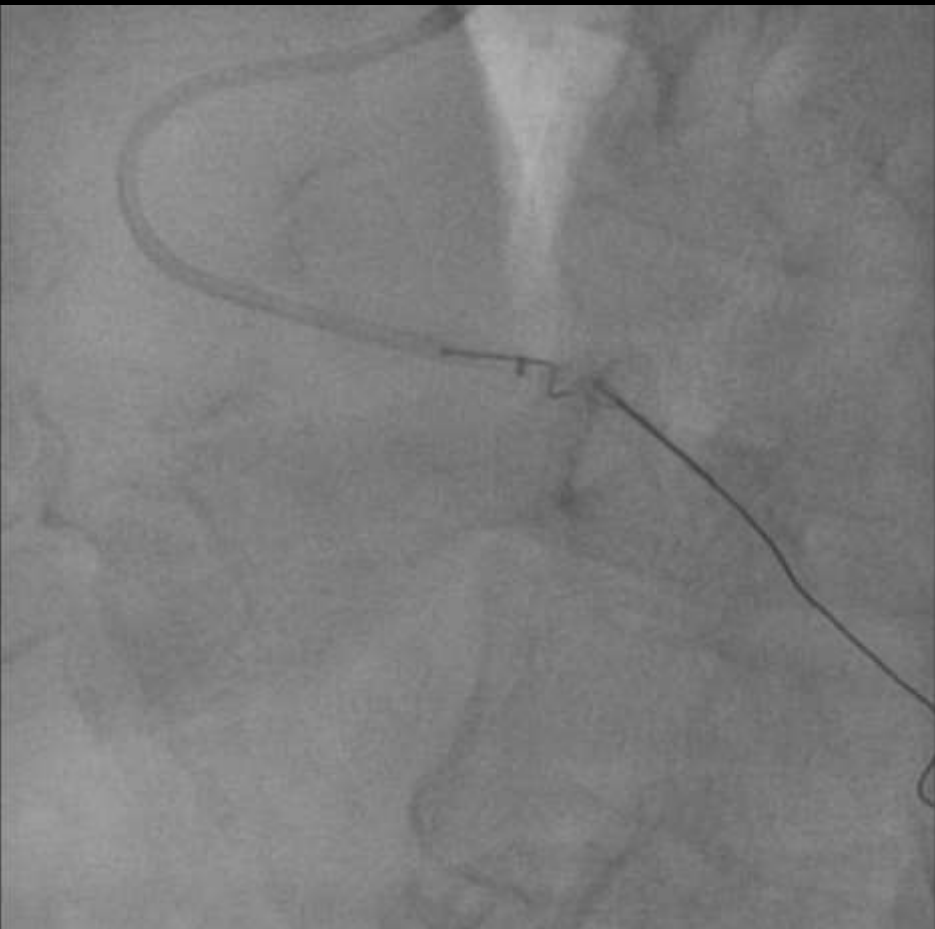
Remove fracture wire

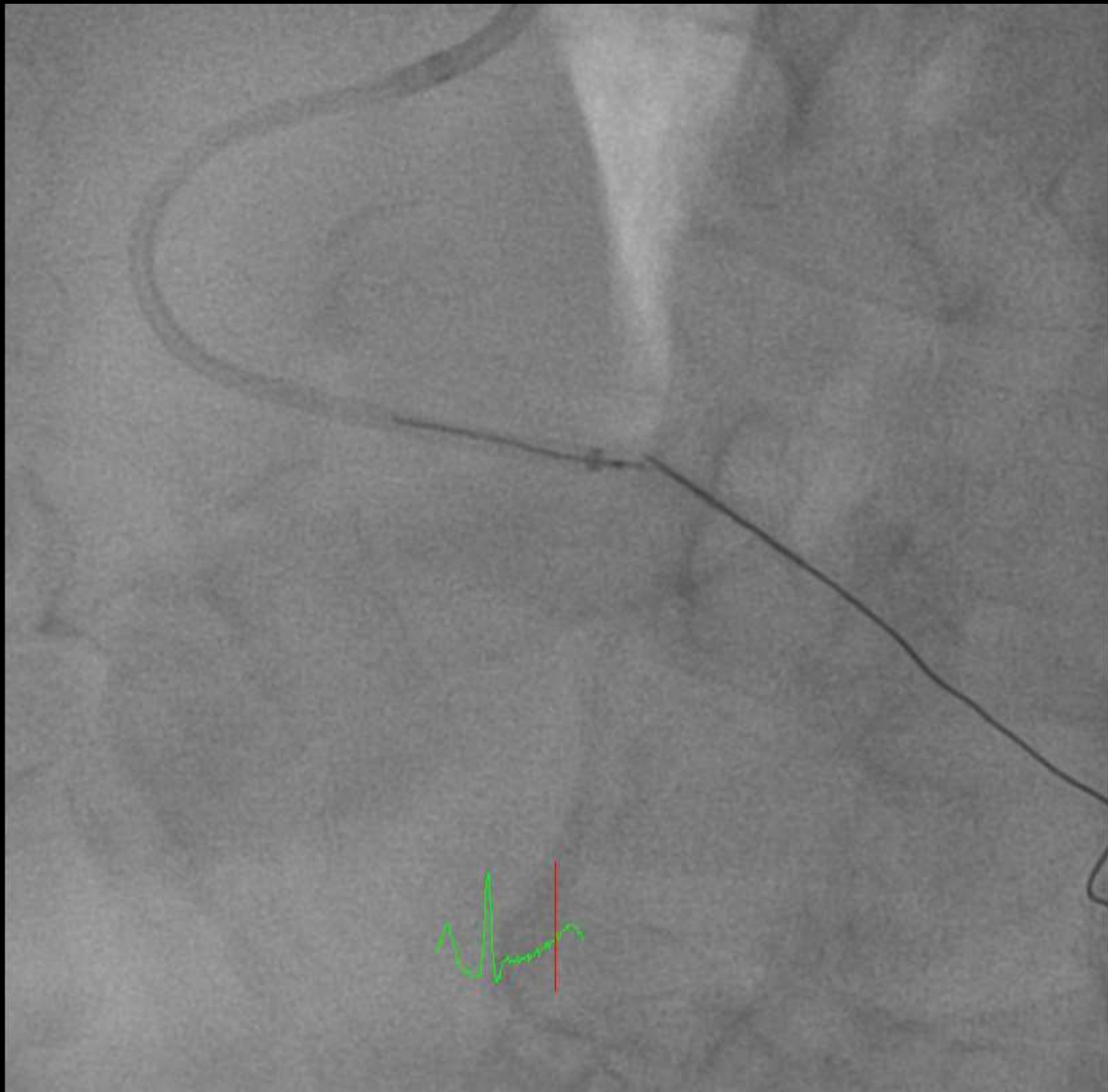
Two or three wire rotation

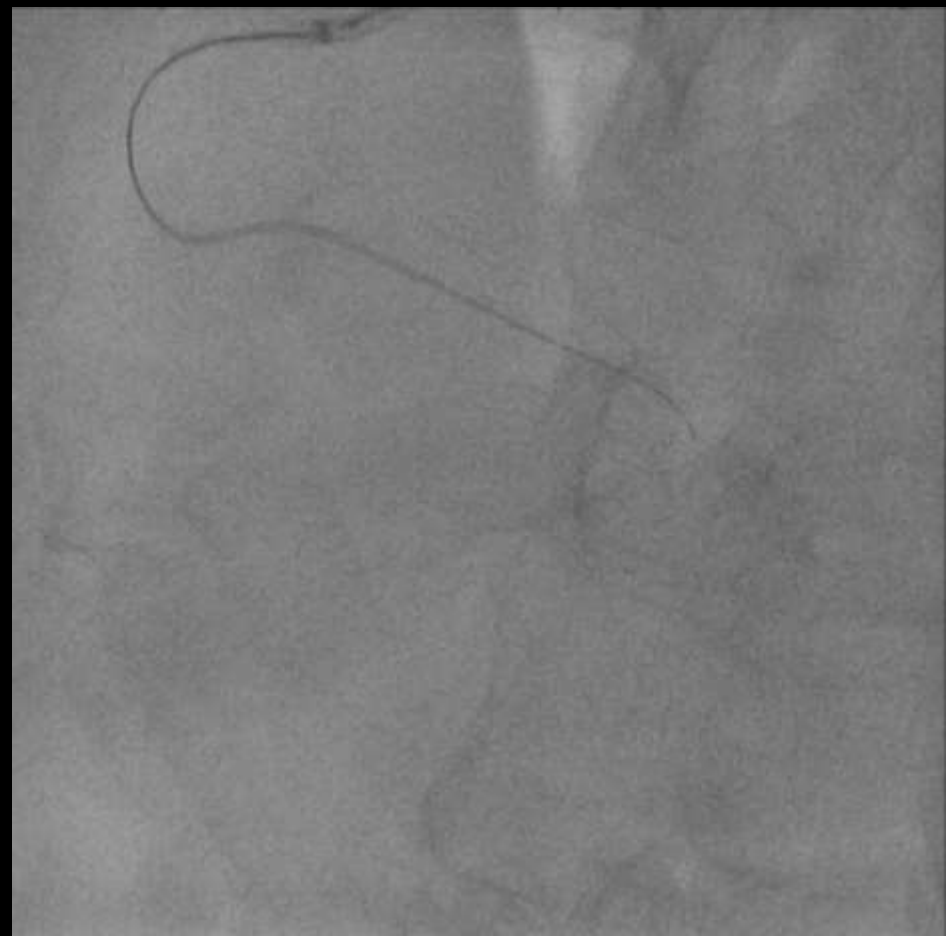
Stenting over

Observation

Loop snare removal

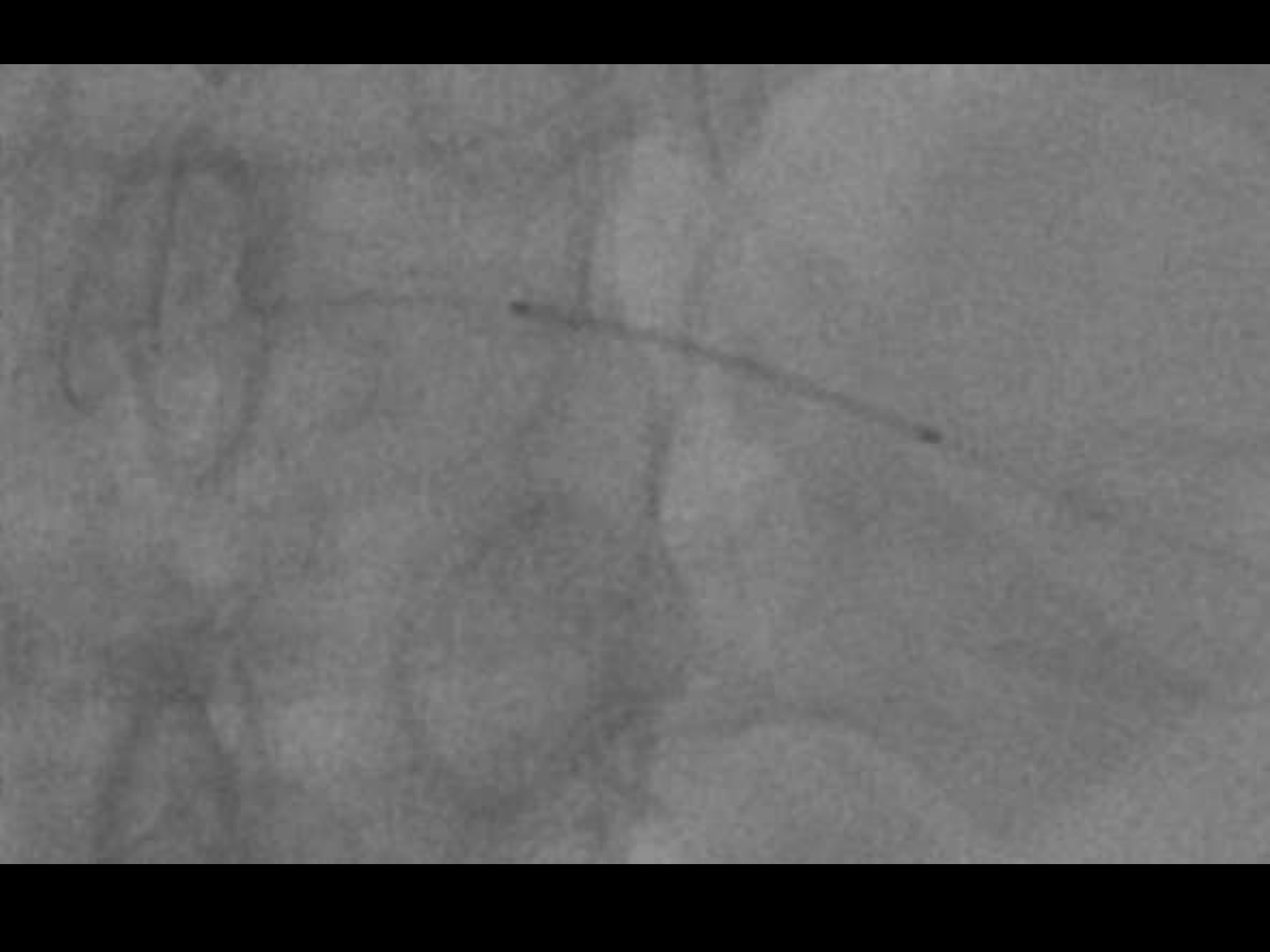


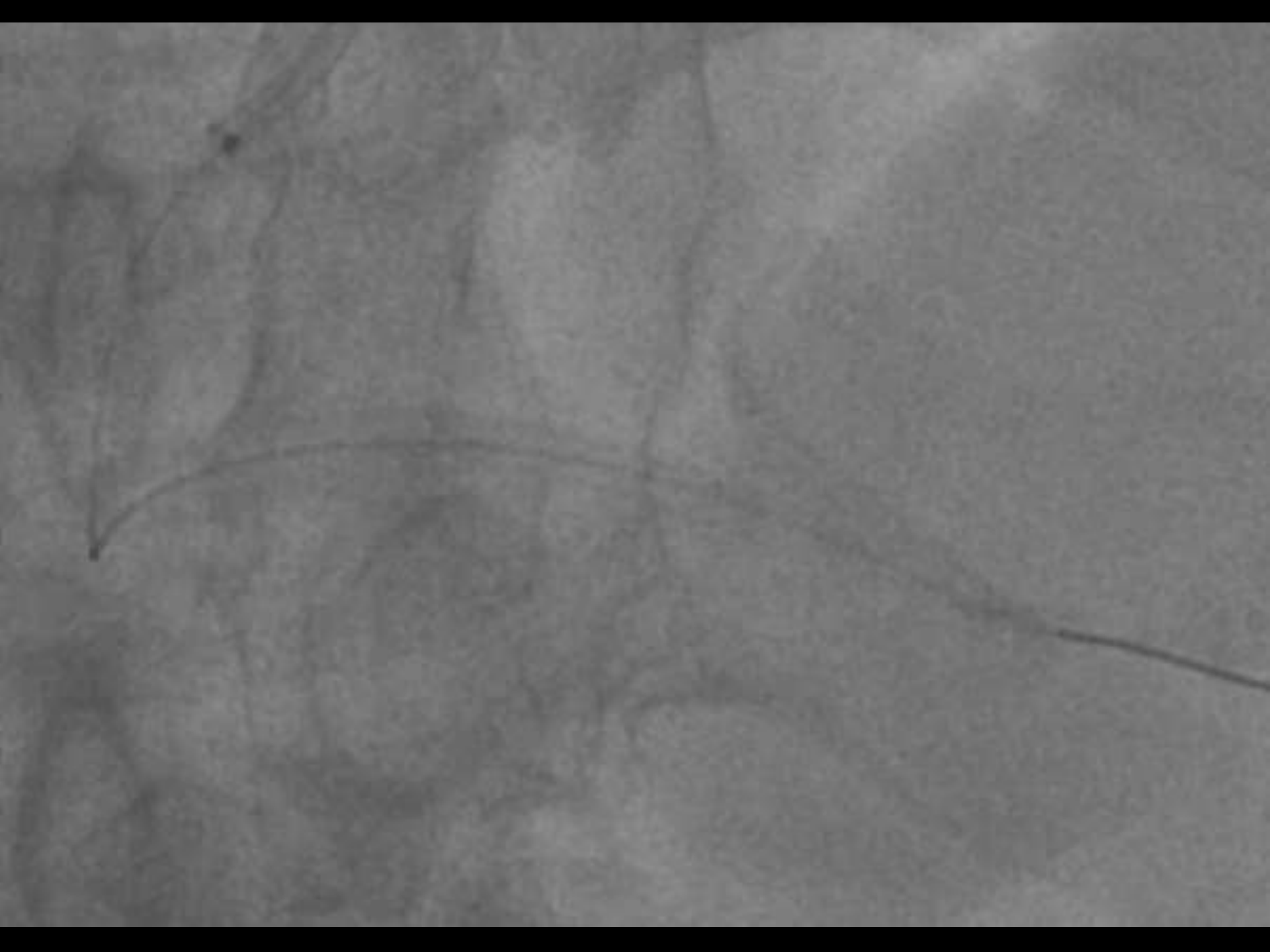




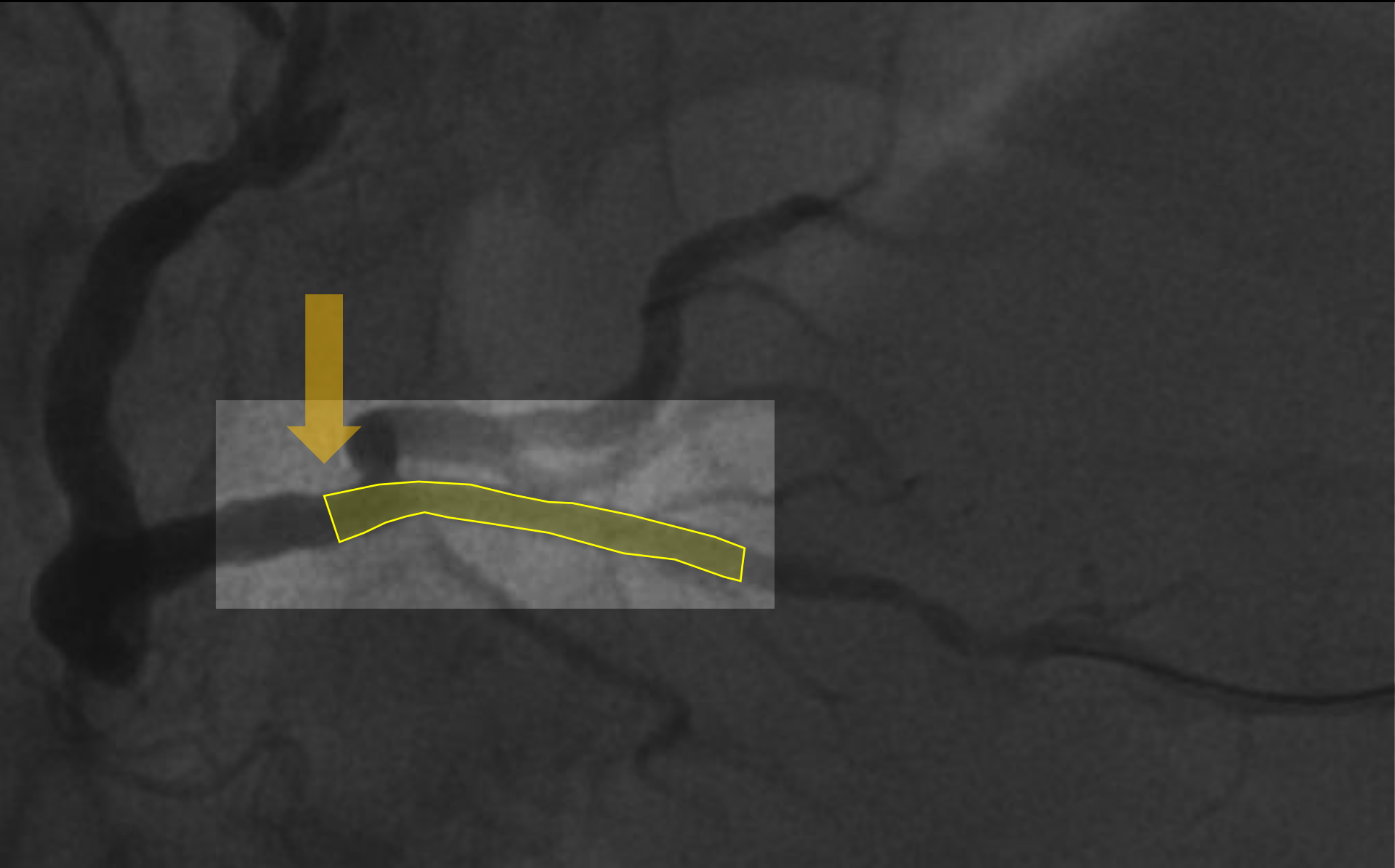


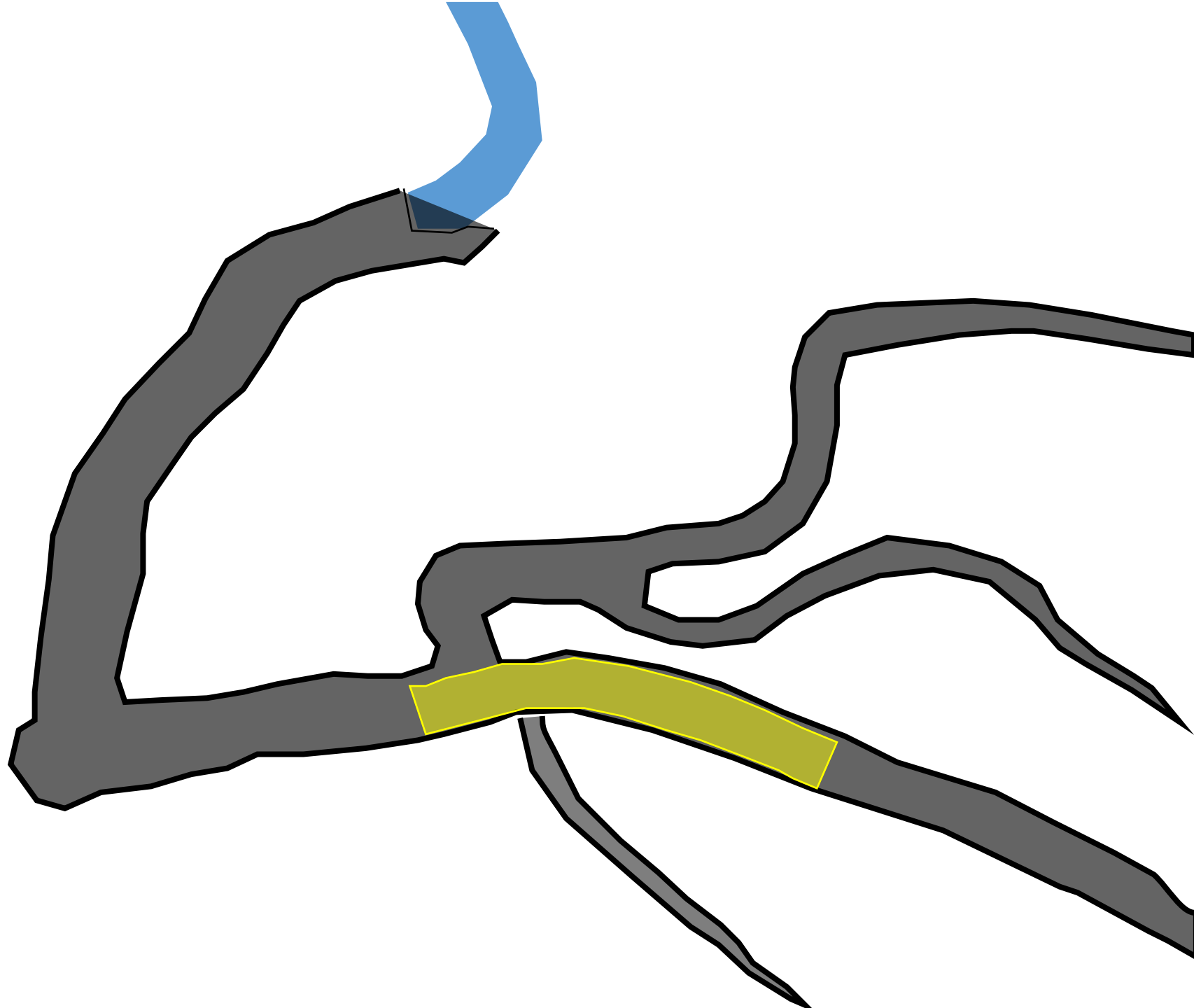
What Happened ?



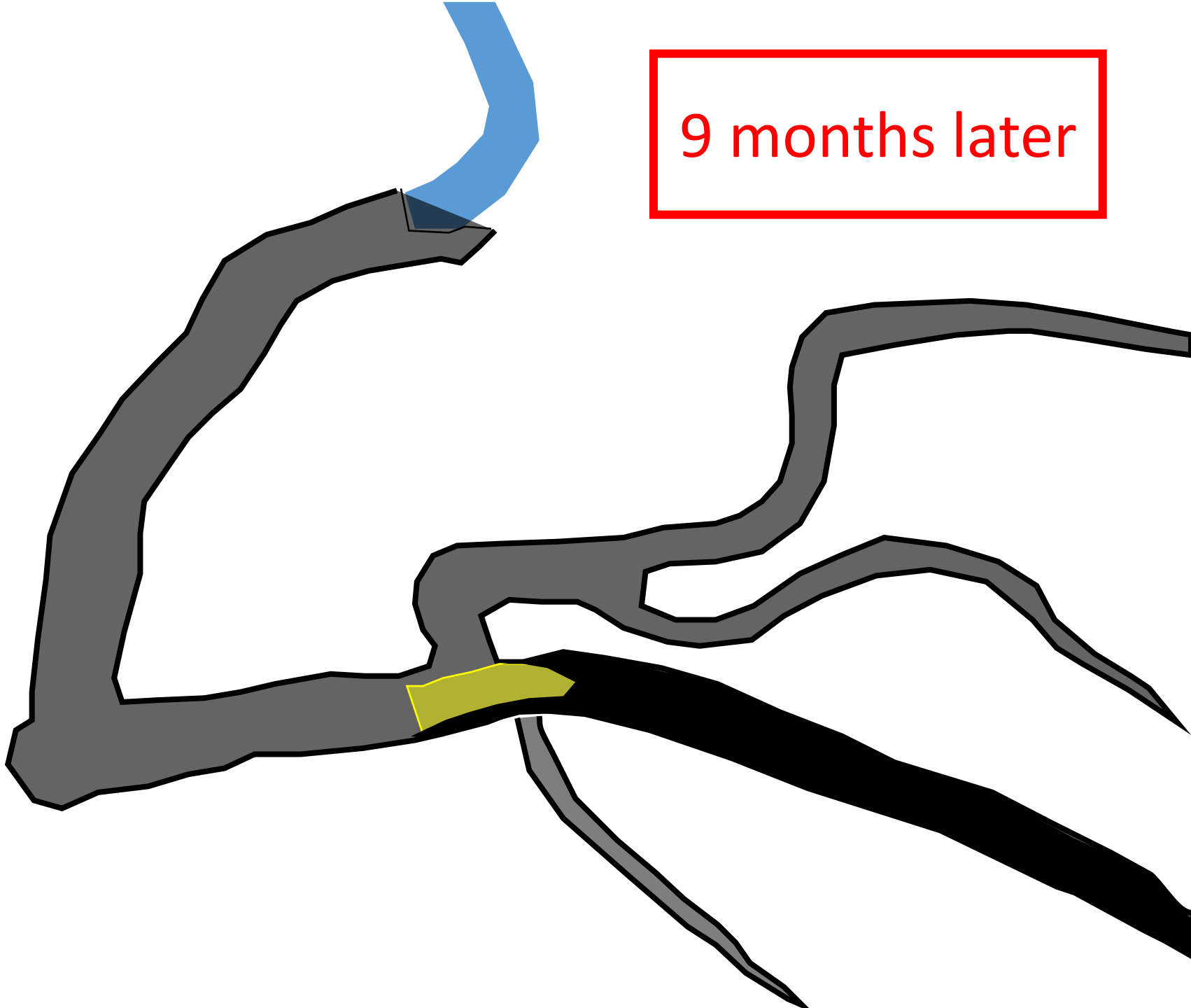




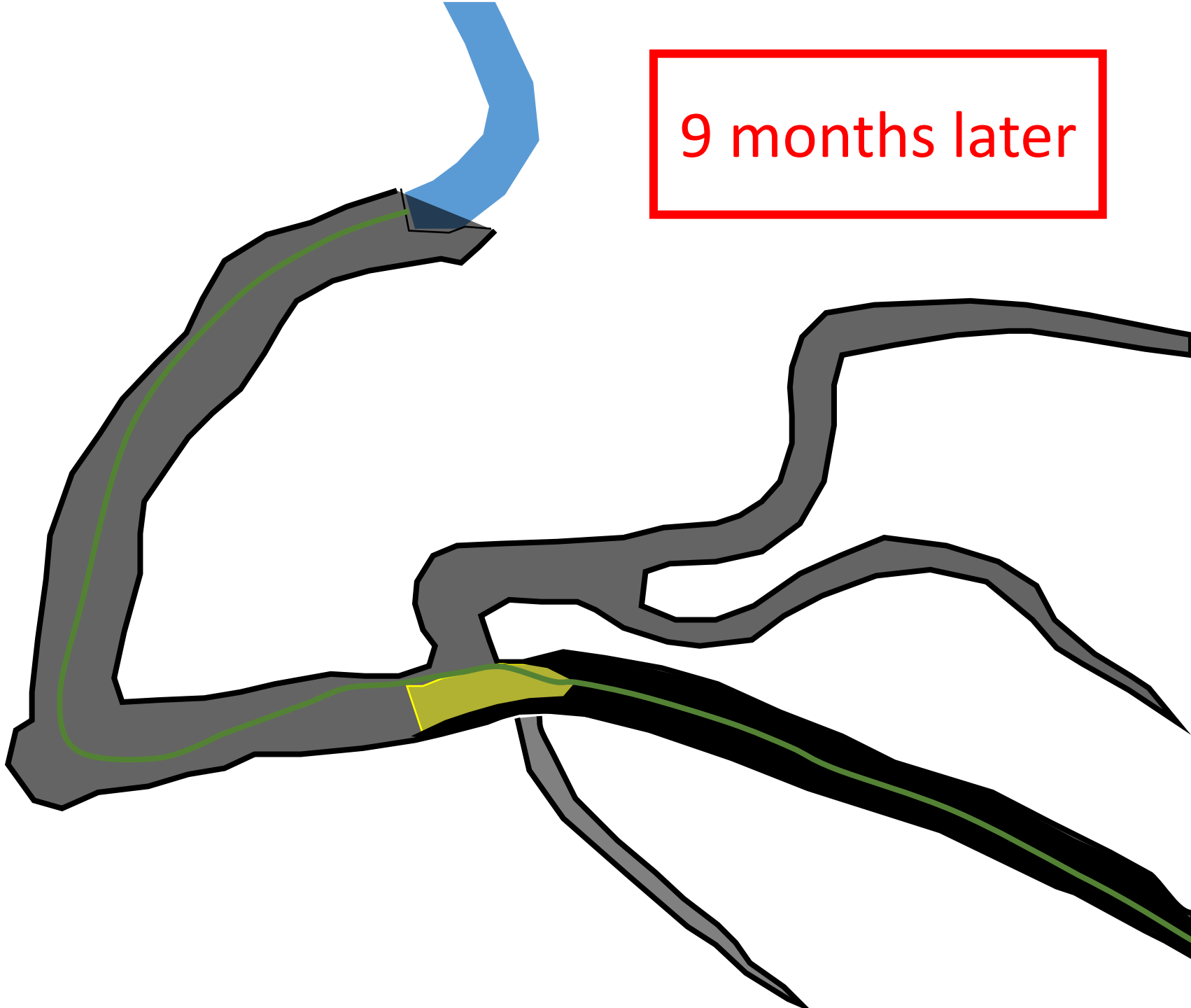




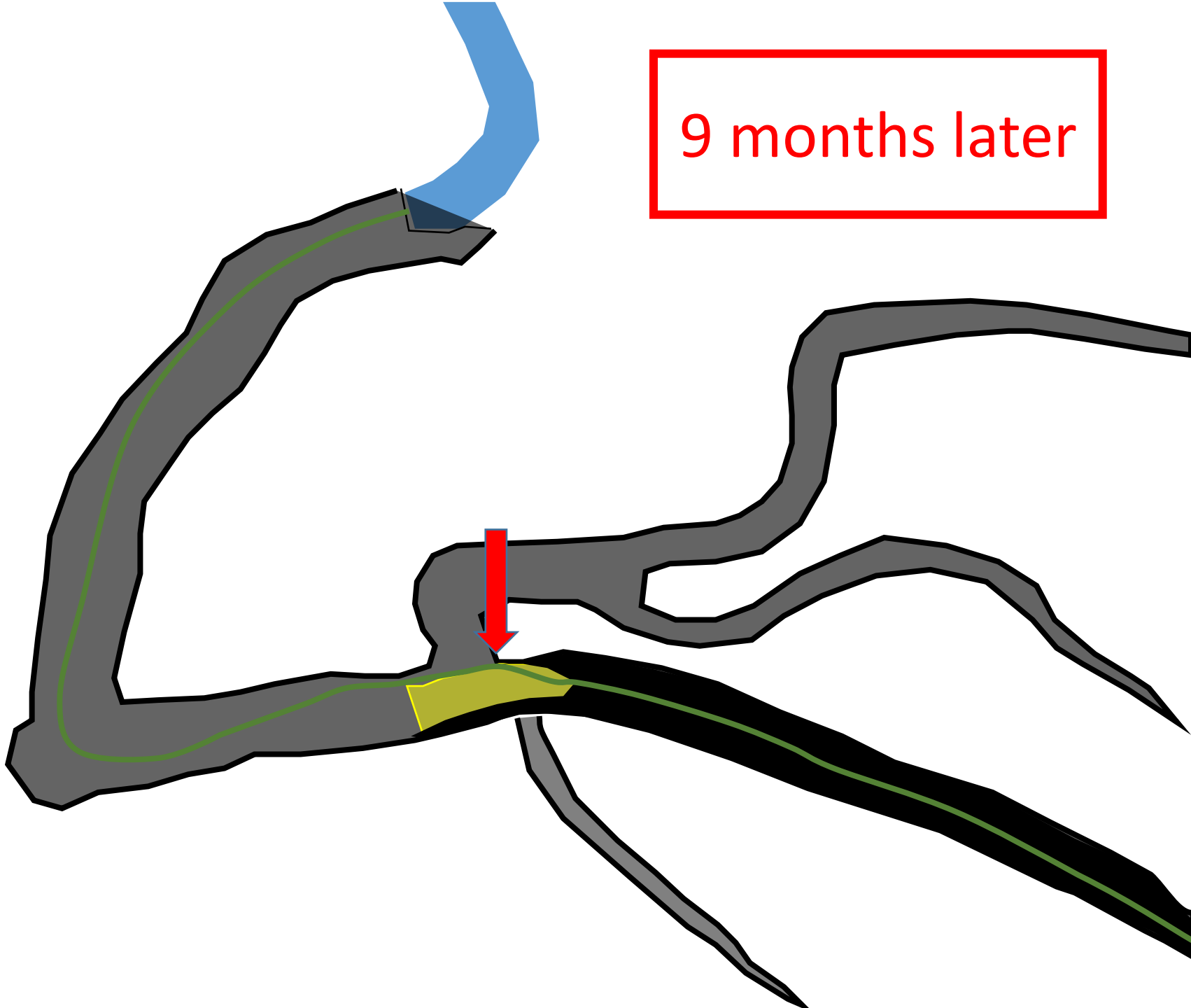
9 months later



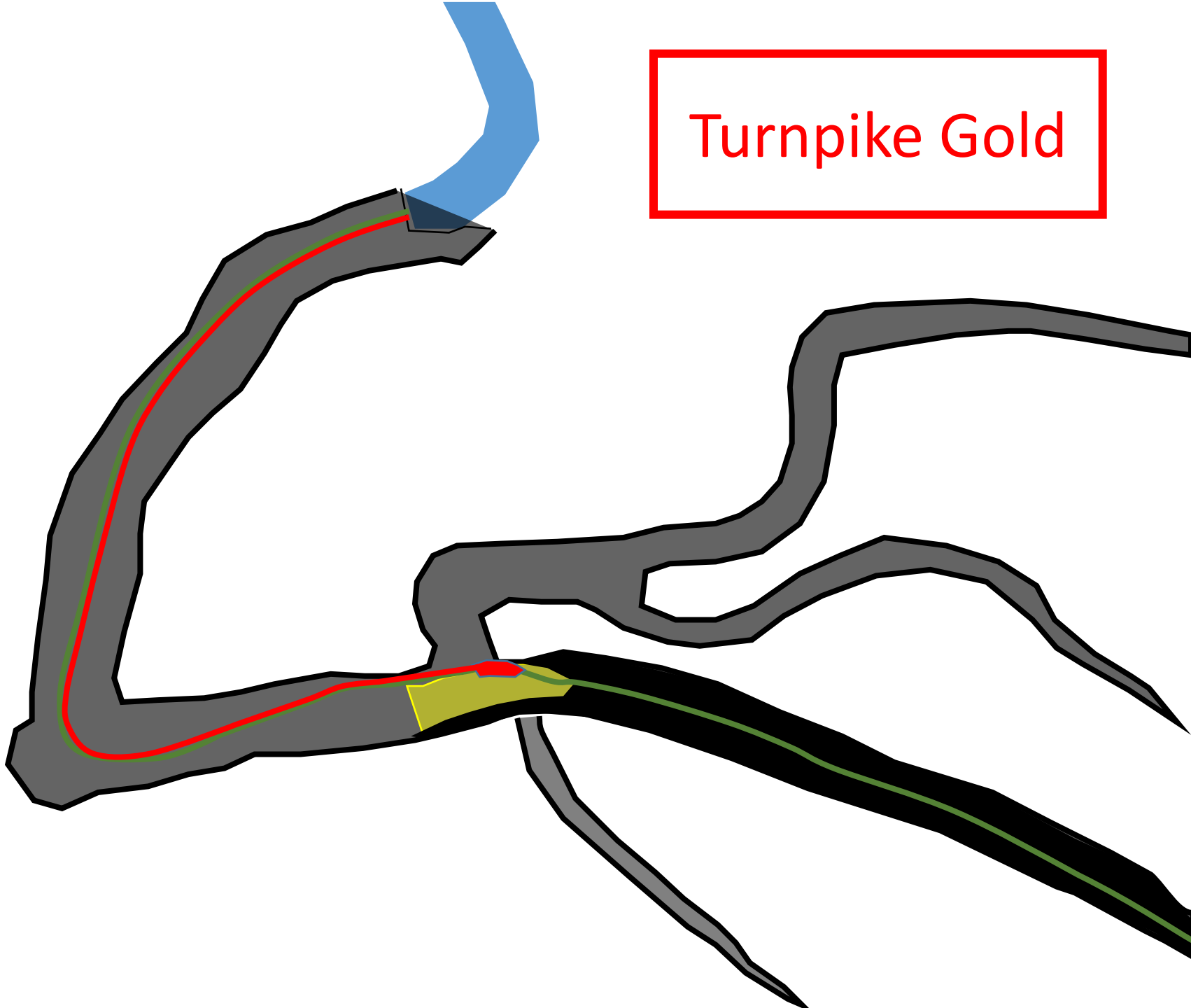
9 months later



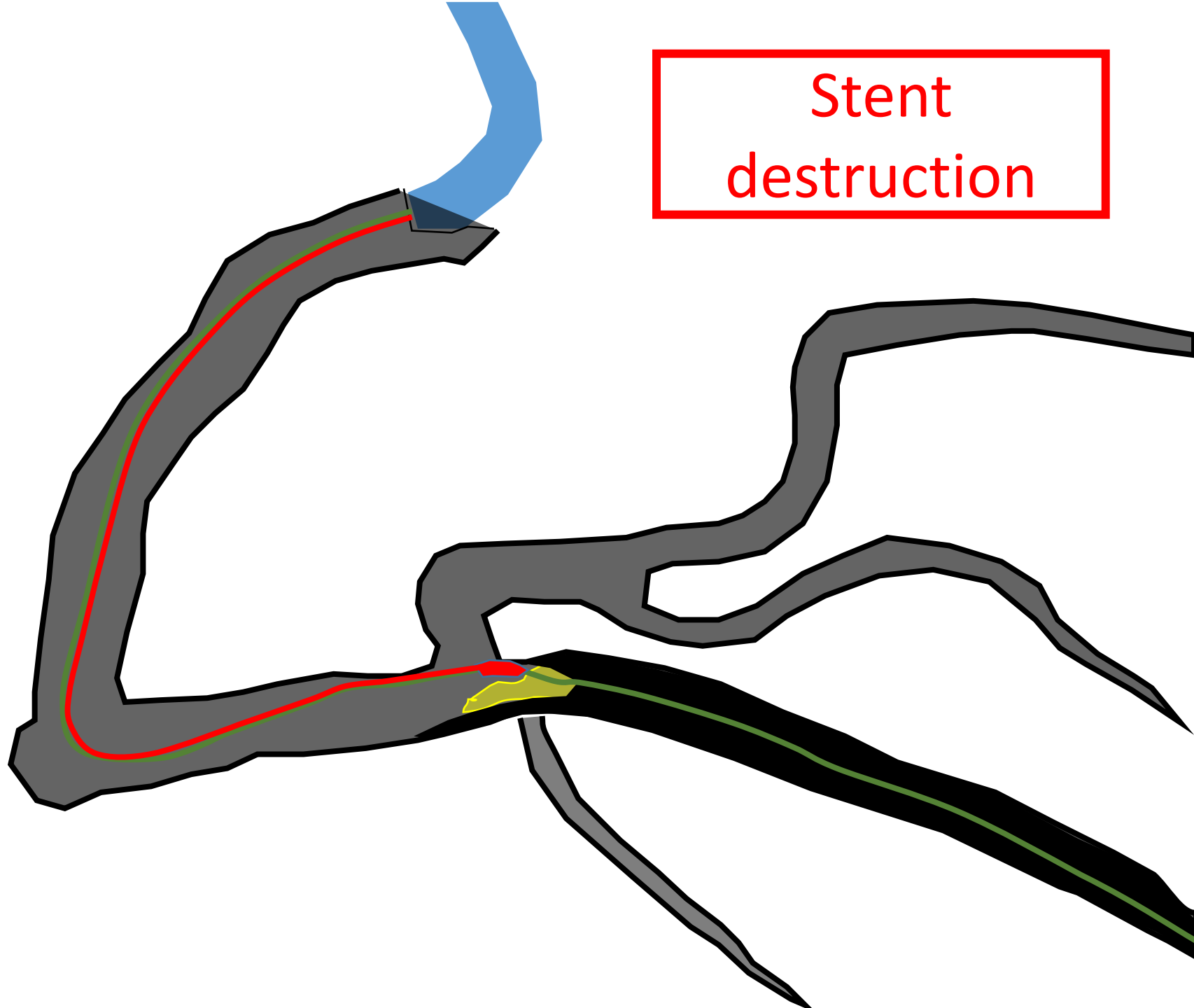
9 months later

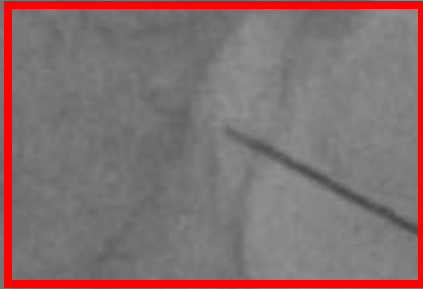


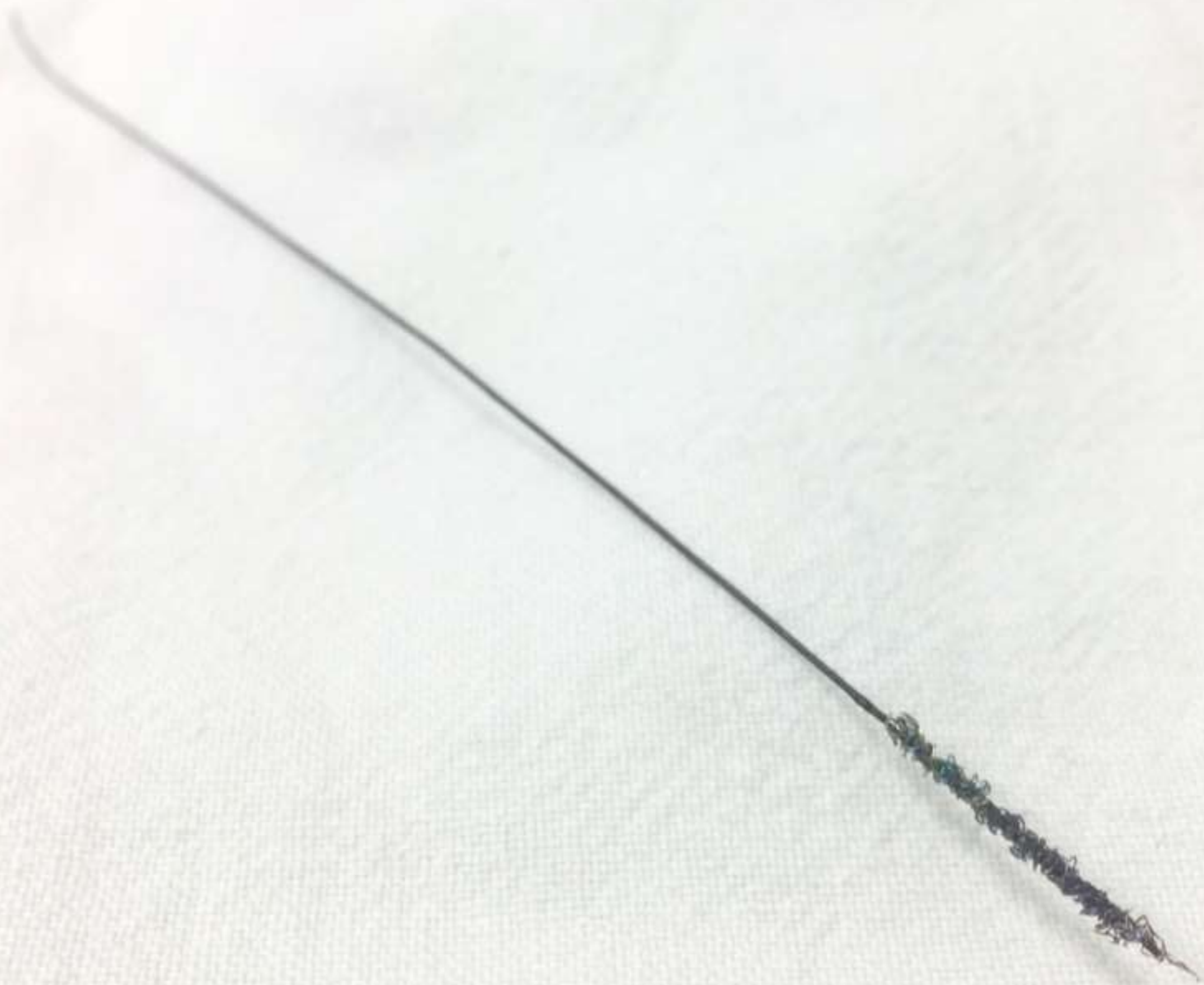
Turnpike Gold



Stent
destruction









What I learn from this case

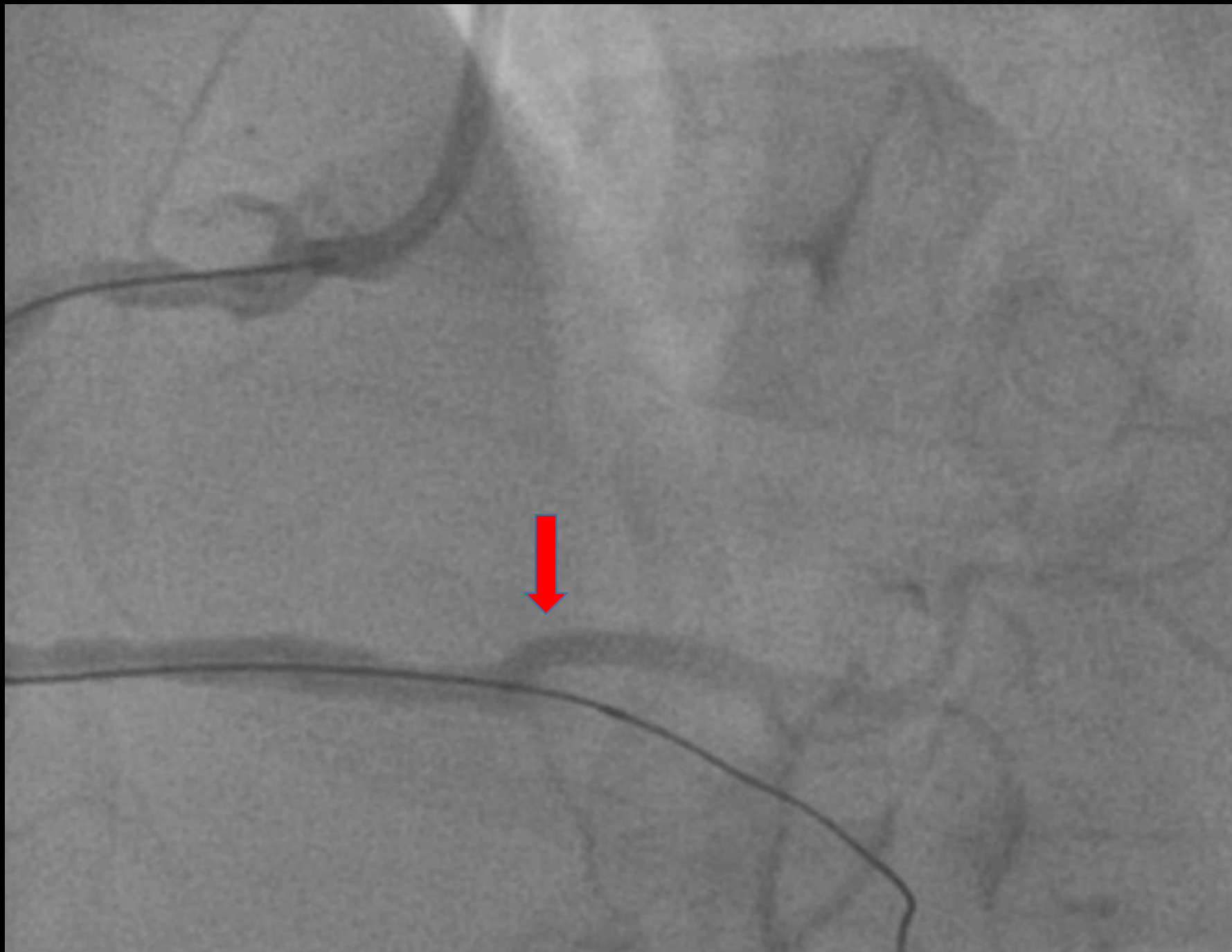
What I learn from this case

When difficult to cross a in-stent CTO, **wire pass through stent strut** should be considered

What I learn from this case

When difficult to cross a in-stent CTO, **wire pass through stent strut** should be considered

Consider **image study** before using channel dilator



What I learn from this case

Wire fracture is a rare but possible complication during PCI

What I learn from this case

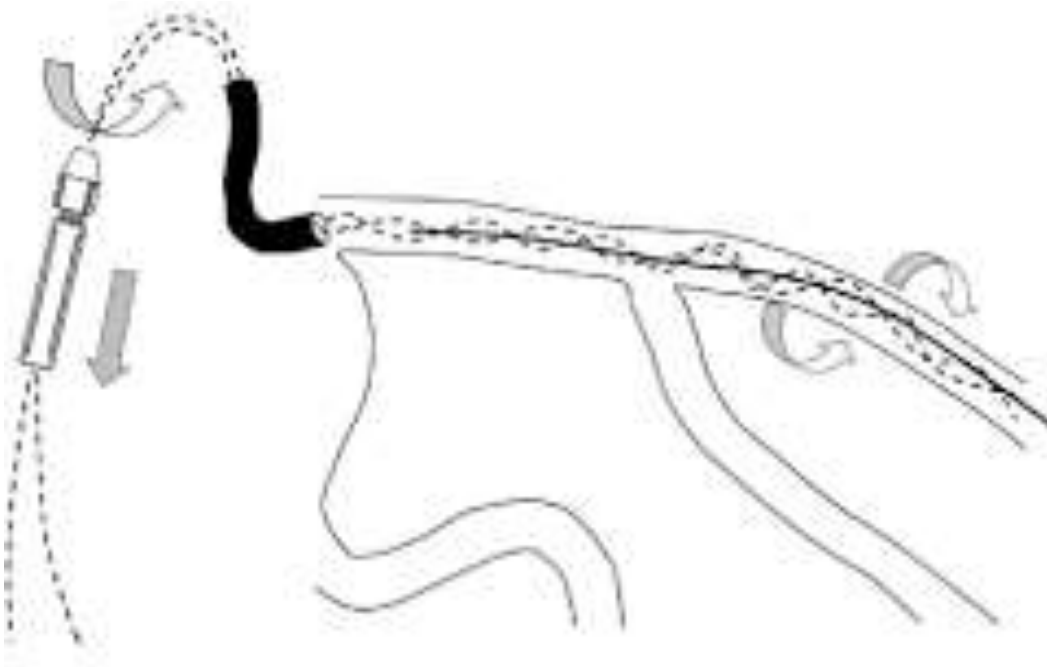
Wire fracture is a rare but possible complication during PCI

Guidewire remnant could lead to **thrombosis, emboli, perforation**

Retrieval method

Retrieval method

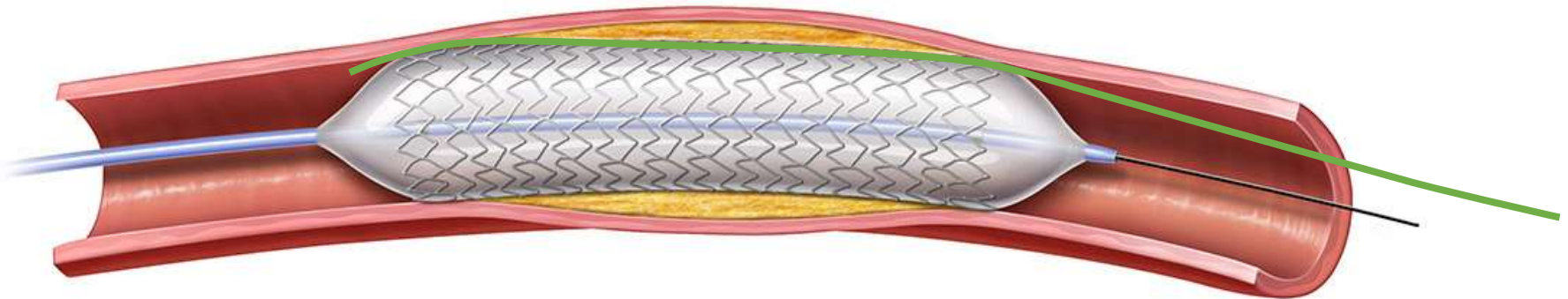
Two or three wire rotation



Retrieval method

Two or three wire rotation

Stenting over

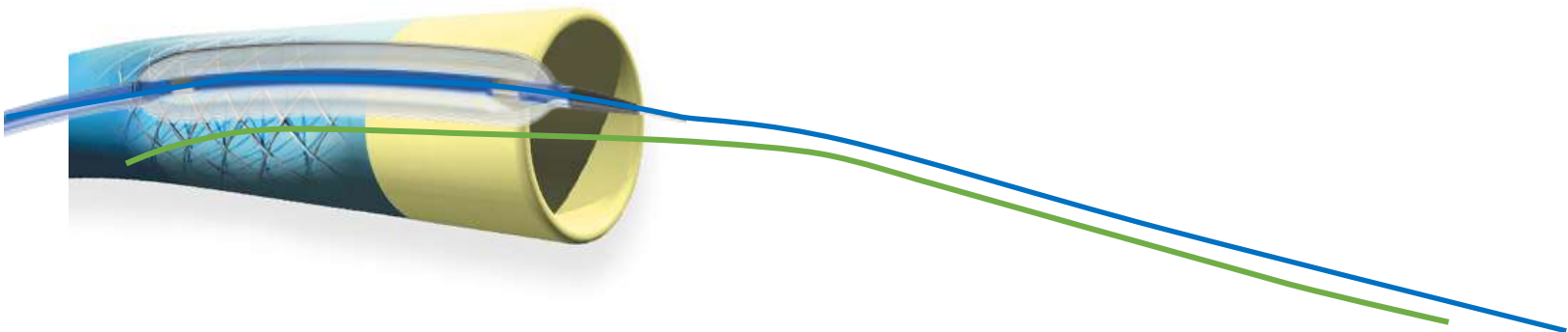


Retrieval method

Two or three wire rotation

Stenting over

Deep catheter wedge



Retrieval method

Two or three wire rotation

Stenting over

Deep catheter wedge

Loop snare removal



Retrieval method

Two or three wire rotation

Stenting over

Deep catheter wedge

Loop snare removal

Surgical intervention

Retrieval method

Two or three wire rotation

Stenting over

Deep catheter wedge

Loop snare removal

Surgical intervention

Conservative treatment

Bruce Lee
1840-1973



Be water, my friend

Thank you

Mackay Memorial Hospital

Dr. Shu-I Lin, MD

yardbird881@gmail.com

